

# 2024 TPI BASE

## HOLSTEIN

### RED HOLSTEIN

Sire Catalogue  
Proofs: August 2024



Gladius, Photo: Christine Massfeller



**GGI-SPERMEX**  
Genetics made in Germany



# Looking for German quality genetics published with US BREEDING VALUES?

## Your first source of top-class genetics for your herd

GGI-SPERMEX GmbH represents 12 leading German breeding and A.I. organizations at the international market for cattle genetics and is offering a unique product line from across Germany including experience, know-how and a wide range of genetics generated from the world's largest dairy breeding populations. This results into a unique portfolio including – besides the key breeds Holstein, Red Holstein, German Fleckvieh and Brown Swiss – more than 20 further dairy and beef cattle breeds, i.e. Angler, Jersey, several dual purpose and beef breeds.

In co-operation with our international partners, GGI-SPERMEX offers breeders worldwide access to the entire potential of German cattle breeding. The German breeding philosophy is clearly reflected in GGI-SPERMEX's product range. This includes high milk production with high components, very balanced conformation with excellent feet & legs and functional, healthy udders as well as high fertility and very good longevity. The aim is an efficient, healthy, trouble-free cow with high production over many lactations under a variety of housing and climatic conditions.

With this catalogue GGI-SPERMEX proudly presents a selection of top Holstein, Red Holstein and Jersey bulls published with US breeding values.

If you are looking for German Fleckvieh and Brown Swiss, a separate catalogue for each of these breeds is available through GGI-SPERMEX as well. Please contact GGI-SPERMEX directly or our international partners for local service.

✉ [info@ggi-spermex.de](mailto:info@ggi-spermex.de)

@ [www.ggi-spermex.de](http://www.ggi-spermex.de)

f /GGI.SPERMEX

Holstein /  
Red Holstein

f /SPERMEX

Fleckvieh /  
Brown Swiss

📷 /GGISPERMEX

📺 /GGI-SPERMEX



GARETT daughters - Photo by Luca Nollari

## INDEX

### HOLSTEIN

#### GENOMIC

Name	NAAB code	Page
<b>Wham</b>	624HO09117	3
<b>Honest</b>	624HO09119	3
<b>Ecostar</b>	624HO09118	4
<b>Rome</b>	624HO09121	4
<b>Rodeo</b>	624HO09127	5
<b>Roulette</b>	624HO09120	5
<b>Hagrid</b>	624HO09125	6
<b>Perth</b>	624HO09122	6
<b>Neal</b>	624HO09101	7
<b>Picobello</b>	624HO09098	7
<b>Pueblo</b>	624HO09124	8
<b>Pinto P</b>	624HO09123	8
<b>Madttime</b>	624HO09096	9
<b>Camiro</b>	624HO09126	9
<b>Glenn</b>	624HO09081	10
<b>Dablino</b>	624HO09110	10
<b>Comeback</b>	624HO09115	11
<b>Krispy</b>	624HO09102	11
<b>Aljano</b>	624HO09104	12
<b>Manchester</b>	624HO09109	12
<b>Pilot</b>	624HO09103	13
<b>Manitu</b>	624HO09097	13
<b>Graham</b>	624HO09086	14
<b>Tubus</b>	624HO09083	14
<b>Benedetto</b>	624HO09108	15
<b>Golf</b>	624HO09079	15

#### GENOMIC POLLED

<b>Baltic PP</b>	624HO09107	16
<b>Hadil PP</b>	624HO09093	16

#### DAUGHTER PROVEN

Name	NAAB code	Page
<b>Garett</b>	624HO09050	19
<b>Gladius</b>	624HO09077	19
<b>Predar</b>	---	20
<b>Garido</b>	624HO09030	20
<b>Garfield</b>	---	21

### RED HOLSTEIN

#### GENOMIC

Name	NAAB code	Page
<b>Faramir</b>	624WW09112	18
<b>Spooky Red</b>	624WW09113	18

#### GENOMIC POLLED

<b>Mo Red PP</b>	624WW09105	17
<b>Holmer PP</b>	624WW09091	17

#### DAUGHTER PROVEN

Name	NAAB code	Page
<b>Garnier</b>	---	21

### JERSEY

#### GENOMIC

Name	NAAB code	Page
<b>Value PP</b>	624JE08004	22
<b>Libori PP</b>	624JE08005	23



**GGI-SPERMEX**  
Genetics made in Germany

# WHAM

823321  
624HO09117  
HOL840M003245603430

Born: 2023-2-18 WELCOME GABRIEL WHAM-ET

Beta Caseine **A2A2** | Kappa Caseine **AB** | aAa --- | |

**TPI 3183** Milk lbs Fat Protein Daughters: 0  
**NM\$1169** +1355 +0.28 % +0.09 % Herds: 0  
 CM\$ 1189 +127 lbs +68 lbs Reliability: 79 %  
 FM\$ 1034  
 GM\$ 1090

♂ **War Gear** (♂ Gameday)

♀ **Gabrie** (1) GP 83 (♂ **Parfect**)

∅ Loc.: 1/1 12431 4,75 590 3,49 434

♀ **Gabrielle** (1) GP 83 (♂ **Rome 14192**)

∅ Loc.: 1/1 12131 4,67 566 3,44 417

♀ **Gale** (4) EX 90 (♂ **Legendary**)



Wham

Proofs: 08-2024



<b>PL</b>	Productive life	+6.6	74 % Rel.
<b>LIV</b>	Livability	+1.3	71 % Rel.
<b>SCS</b>	Somatic cell score	+2.78	75 % Rel.
<b>DPR</b>	Daughter pregnancy rate	-1.1	74 % Rel.
<b>HCR</b>	Heifer conception rate	+3.5	72 % Rel.
<b>CCR</b>	Cow conception rate	+1.3	74 % Rel.
<b>FI</b>	Fertility index	+0.7	74 % Rel.
<b>SCE</b>	Sire calving ease	2.1 %	63 % Rel.
<b>DCE</b>	Daughter calving ease	2.8 %	57 % Rel.
<b>SSB</b>	Sire stillbirth	6.6 %	60 % Rel.
<b>DSB</b>	Daughter stillbirth	4.6 %	56 % Rel.
<b>GL</b>	Gestation length	-0.6	72 % Rel.

823321 Wham		-1	0	+1	+2
PTAT	Type				+1.18
UDC	Udder Composite				+1.58
FLC	Feet & Legs Composite				+0.67
BSC	Body Composite				-0.41
Stature	Short				-0.56 Tall
Strength	Frail				-0.23 Strong
Body depth	Shallow				-0.50 Deep
Dairy form	Tight Ribbed				+0.39 Open Ribbed
Rump angle	High Pins				-0.81 Sloped
Thurl width	Narrow				+0.65 Wide
Rear leg (side view)	Posty				+0.42 Sickled
Rear leg (rear view)	Hock-in				+0.71 Straight
Foot angle	Low Angle				+0.17 Steep Angle
Feet & Legs Score	Low				+0.47 High
Fore udder attachment	Loose				+1.60 Strong
Rear udder height	Low				+2.12 High
Rear udder width	Narrow				+2.09 Wide
Udder cleft	Weak				-0.16 Strong
Udder depth	Deep				+0.62 Shallow
Front teat placement	Wide				+0.25 Close
Rear teat placement	Wide				+0.30 Close
Teat length	Short				-0.55 Long

# HONEST

811707  
624HO09119  
HOLDEUM001260273157

Born: 2023-5-29

Beta Caseine **A2A2** | Kappa Caseine **AA** | aAa **423651** | |

**TPI 3146** Milk lbs Fat Protein Daughters: 0  
**NM\$1107** +1201 +0.19 % +0.09 % Herds: 0  
 CM\$ 1128 +98 lbs +61 lbs Reliability: 79 %  
 FM\$ 980  
 GM\$ 1072

♂ **Hypnotic** (♂ Moonshiner)

♀ **Welcome Topdog** Gurley-ET (♂ **Top Dog**)

∅ Loc.: -/-

♀ **Welcome Eisaku** Gally-ET (1) GP 83 (♂ **Eisaku**)

∅ Loc.: -/-

♀ **W. L. Gale**-ET (4) EX 90 (♂ **Legendary**)



Honest

Proofs: 08-2024



<b>PL</b>	Productive life	+6.9	74 % Rel.
<b>LIV</b>	Livability	+2.4	71 % Rel.
<b>SCS</b>	Somatic cell score	+2.68	75 % Rel.
<b>DPR</b>	Daughter pregnancy rate	+1.3	74 % Rel.
<b>HCR</b>	Heifer conception rate	+2.2	72 % Rel.
<b>CCR</b>	Cow conception rate	+2.5	74 % Rel.
<b>FI</b>	Fertility index	+2.1	74 % Rel.
<b>SCE</b>	Sire calving ease	1.9 %	63 % Rel.
<b>DCE</b>	Daughter calving ease	1.7 %	57 % Rel.
<b>SSB</b>	Sire stillbirth	5.7 %	60 % Rel.
<b>DSB</b>	Daughter stillbirth	3.5 %	55 % Rel.
<b>GL</b>	Gestation length	-0.8	72 % Rel.

811707 Honest		-1	0	+1	+2
PTAT	Type				+1.63
UDC	Udder Composite				+1.56
FLC	Feet & Legs Composite				+1.11
BSC	Body Composite				+0.54
Stature	Short				+0.87 Tall
Strength	Frail				+0.29 Strong
Body depth	Shallow				-0.25 Deep
Dairy form	Tight Ribbed				-0.16 Open Ribbed
Rump angle	High Pins				-0.54 Sloped
Thurl width	Narrow				+0.42 Wide
Rear leg (side view)	Posty				-0.85 Sickled
Rear leg (rear view)	Hock-in				+1.20 Straight
Foot angle	Low Angle				+1.77 Steep Angle
Feet & Legs Score	Low				+1.20 High
Fore udder attachment	Loose				+2.21 Strong
Rear udder height	Low				+1.90 High
Rear udder width	Narrow				+1.19 Wide
Udder cleft	Weak				+0.51 Strong
Udder depth	Deep				+2.22 Shallow
Front teat placement	Wide				+0.20 Close
Rear teat placement	Wide				+0.25 Close
Teat length	Short				-0.08 Long



# ECOSTAR

823322  
624HO09118  
HOL840M003205426031

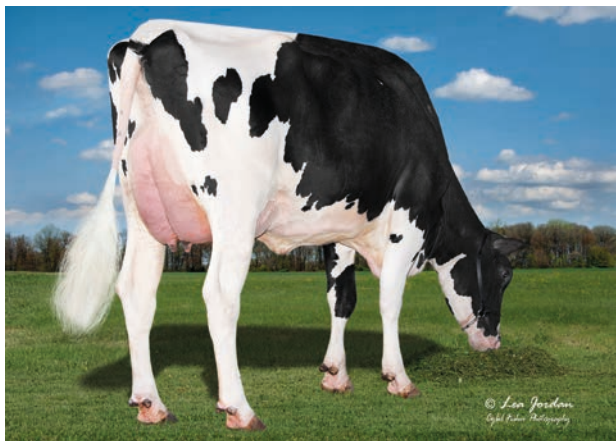
Born: 2023-5-18 AR-JOY CU ENCLV ECOSTAR-ET

Beta Caseine **A2A2** | Kappa Caseine **BB** | aAa --- | |

**TPI 3118** Milk lbs Fat Protein Daughters: 0  
**NM\$1104** +1352 +0.20 % +0.08 % Herds: 0  
 CM\$ 1125 +105 lbs +64 lbs Reliability: 79 %  
 FM\$ 982  
 GM\$ 1038

♂ Enclave (♂ Regal)

♀ Melissa (♂ Conway)  
 ∅ Lac.: -/  
 ♀ Rv Michele (1) VG 87 (♂ Riveting)  
 ∅ Lac.: 1/1 12512 4,80 601 3,92 491  
 ♀ Music (♂ Medley)



M: Ar-Joy CU Conway Melissa

Proofs: 08-2024



<b>PL</b>	Productive life	+6.4	74 % Rel.
<b>LIV</b>	Livability	±0.0	71 % Rel.
<b>SCS</b>	Somatic cell score	+2.62	75 % Rel.
<b>DPR</b>	Daughter pregnancy rate	-0.5	74 % Rel.
<b>HCR</b>	Heifer conception rate	+2.2	72 % Rel.
<b>CCR</b>	Cow conception rate	+0.7	74 % Rel.
<b>FI</b>	Fertility index	+0.8	74 % Rel.
<b>SCE</b>	Sire calving ease	1.7 %	63 % Rel.
<b>DCE</b>	Daughter calving ease	1.5 %	57 % Rel.
<b>SSB</b>	Sire stillbirth	6.2 %	60 % Rel.
<b>DSB</b>	Daughter stillbirth	4.7 %	55 % Rel.
<b>GL</b>	Gestation length	-1.6	72 % Rel.

823322 Ecostar		-1	0	+1	+2
PTAT	Type				+1.46
UDC	Udder Composite				+2.04
FLC	Feet & Legs Composite				+0.55
BSC	Body Composite				+0.46
Stature	Short				+0.38 Tall
Strength	Frail				+0.28 Strong
Body depth	Shallow				-0.42 Deep
Dairy form	Tight Ribbed				-0.31 Open Ribbed
Rump angle	High Pins				+1.34 Sloped
Thurl width	Narrow				+0.34 Wide
Rear leg (side view)	Posty				+0.09 Sickled
Rear leg (rear view)	Hock-in				+0.92 Straight
Foot angle	Low Angle				+0.59 Steep Angle
Feet & Legs Score	Low				+0.50 High
Fore udder attachment	Loose				+2.88 Strong
Rear udder height	Low				+2.46 High
Rear udder width	Narrow				+2.00 Wide
Udder cleft	Weak				+0.01 Strong
Udder depth	Deep				+2.24 Shallow
Front teat placement	Wide				+0.83 Close
Rear teat placement	Wide				+0.28 Close
Teat length	Short				-1.24 Long

# ROME

101111  
624HO09121  
HOLITAM001991465516

Born: 2022-10-8 FANTASY GPLUS IMJP ROME

Beta Caseine **A2A2** | Kappa Caseine **BB** | aAa **243165** | |

**TPI 3110** Milk lbs Fat Protein Daughters: 0  
**NM\$1157** +1703 +0.15 % +0.08 % Herds: 0  
 CM\$ 1178 +106 lbs +76 lbs Reliability: 79 %  
 FM\$ 1029  
 GM\$ 1068

♂ Regulus (♂ AltaZazzle)

♀ Fantasy GPlus Edera (2) VG 85 (♂ Feature)  
 ∅ Lac.: 2/1 12374 3,26 403 3,01 372  
 ♀ Eden-Red (♂ Achiever)  
 ∅ Lac.: -/  
 ♀ Jedi Edge (0) GP 82 (♂ Jedi)



Rome

Proofs: 08-2024



<b>PL</b>	Productive life	+6.4	74 % Rel.
<b>LIV</b>	Livability	+2.8	71 % Rel.
<b>SCS</b>	Somatic cell score	+2.66	77 % Rel.
<b>DPR</b>	Daughter pregnancy rate	-1.3	74 % Rel.
<b>HCR</b>	Heifer conception rate	+0.1	72 % Rel.
<b>CCR</b>	Cow conception rate	+1.2	74 % Rel.
<b>FI</b>	Fertility index	+0.1	74 % Rel.
<b>SCE</b>	Sire calving ease	1.9 %	63 % Rel.
<b>DCE</b>	Daughter calving ease	1.5 %	57 % Rel.
<b>SSB</b>	Sire stillbirth	5.2 %	59 % Rel.
<b>DSB</b>	Daughter stillbirth	3.5 %	55 % Rel.
<b>GL</b>	Gestation length	-1.0	72 % Rel.

101111 Rome		-1	0	+1	+2
PTAT	Type				+1.18
UDC	Udder Composite				+1.26
FLC	Feet & Legs Composite				-0.01
BSC	Body Composite				-0.04
Stature	Short				+0.96 Tall
Strength	Frail				+0.04 Strong
Body depth	Shallow				+0.10 Deep
Dairy form	Tight Ribbed				+0.83 Open Ribbed
Rump angle	High Pins				+0.01 Sloped
Thurl width	Narrow				+0.56 Wide
Rear leg (side view)	Posty				-0.76 Sickled
Rear leg (rear view)	Hock-in				-0.17 Straight
Foot angle	Low Angle				+0.84 Steep Angle
Feet & Legs Score	Low				+0.27 High
Fore udder attachment	Loose				+1.87 Strong
Rear udder height	Low				+1.49 High
Rear udder width	Narrow				+1.28 Wide
Udder cleft	Weak				+0.42 Strong
Udder depth	Deep				+1.80 Shallow
Front teat placement	Wide				+0.04 Close
Rear teat placement	Wide				+0.21 Close
Teat length	Short				+0.19 Long

# RODEO

691357  
624HO09127  
HOLDEUM000542467378

Born: 2023-8-12 CHERRYPENCOL RUW RODEO

Beta Caseine **A2A2** | Kappa Caseine **AA** | aAa --- | |

**TPI 3100** Milk lbs Fat Protein Daughters: 0  
**NM\$ 1094** +1218 +0.24 % +0.08 % Herds: 0  
 CM\$ 1110 +110 lbs +61 lbs Reliability: 79 %  
 FM\$ 977  
 GM\$ 1044

♂ Rover (♂ AltaZazzle)

♀ Lind 673 GP 81 (♂ Gameday)

♀ Lindy (1) VG 87 (♂ Legacy)

♀ Lauri (1) VG 85 (♂ Jedi)



M: Cherrypencol GD Lind 673

Proofs: 08-2024

<b>PL</b>	Productive life	+6.0	74 % Rel.
<b>LIV</b>	Livability	+3.3	- % Rel.
<b>SCS</b>	Somatic cell score	+2.90	75 % Rel.
<b>DPR</b>	Daughter pregnancy rate	-0.1	74 % Rel.
<b>HCR</b>	Heifer conception rate	+1.0	- % Rel.
<b>CCR</b>	Cow conception rate	+1.1	- % Rel.
<b>FI</b>	Fertility index	-	- % Rel.
<b>SCE</b>	Sire calving ease	1.5 %	61 % Rel.
<b>DCE</b>	Daughter calving ease	2.4 %	57 % Rel.
<b>SSB</b>	Sire stillbirth	6.0 %	57 % Rel.
<b>DSB</b>	Daughter stillbirth	4.9 %	55 % Rel.
<b>GL</b>	Gestation length	-	- % Rel.

Rodeo		-1	0	+1	+2
PTAT	Type				+1.71
UDC	Udder Composite				+2.29
FLC	Feet & Legs Composite				+0.08
BSC	Body Composite				--
Stature	Short				+0.52 Tall
Strength	Frail				-0.80 Strong
Body depth	Shallow				-0.70 Deep
Dairy form	Tight Ribbed				+1.22 Open Ribbed
Rump angle	High Pins				-0.06 Sloped
Thurl width	Narrow				+0.76 Wide
Rear leg (side view)	Posty				+0.34 Sickled
Rear leg (rear view)	Hock-in				-0.49 Straight
Foot angle	Low Angle				+0.46 Steep Angle
Feet & Legs Score	Low				+0.37 High
Fore udder attachment	Loose				+2.77 Strong
Rear udder height	Low				+2.72 High
Rear udder width	Narrow				+2.41 Wide
Udder cleft	Weak				+0.94 Strong
Udder depth	Deep				+2.20 Shallow
Front teat placement	Wide				+1.34 Close
Rear teat placement	Wide				+1.38 Close
Teat length	Short				-1.11 Long

# ROULETTE

691785  
624HO09120  
HOLDEUM000542818245

Born: 2023-7-24 CHERRYPENCOL RUW ROULETTE

Beta Caseine **A2A2** | Kappa Caseine **AA** | aAa --- | |

**TPI 3098** Milk lbs Fat Protein Daughters: 0  
**NM\$ 1066** +974 +0.29 % +0.07 % Herds: 0  
 CM\$ 1082 +115 lbs +49 lbs Reliability: 79 %  
 FM\$ 966  
 GM\$ 1015

♂ Rover (♂ AltaZazzle)

♀ Lind 673 GP 81 (♂ Gameday)

♀ Lindy (1) VG 87 (♂ Legacy)

♀ Lauri (1) VG 85 (♂ Jedi)



Roulette

Proofs: 08-2024

<b>PL</b>	Productive life	+6.2	74 % Rel.
<b>LIV</b>	Livability	+3.0	71 % Rel.
<b>SCS</b>	Somatic cell score	+2.76	75 % Rel.
<b>DPR</b>	Daughter pregnancy rate	+0.3	74 % Rel.
<b>HCR</b>	Heifer conception rate	+2.1	72 % Rel.
<b>CCR</b>	Cow conception rate	+1.1	74 % Rel.
<b>FI</b>	Fertility index	+1.0	74 % Rel.
<b>SCE</b>	Sire calving ease	1.7 %	61 % Rel.
<b>DCE</b>	Daughter calving ease	1.9 %	57 % Rel.
<b>SSB</b>	Sire stillbirth	5.9 %	56 % Rel.
<b>DSB</b>	Daughter stillbirth	4.2 %	55 % Rel.
<b>GL</b>	Gestation length	-0.1	72 % Rel.

691785 Roulette		-1	0	+1	+2
PTAT	Type				+1.61
UDC	Udder Composite				+2.05
FLC	Feet & Legs Composite				+0.71
BSC	Body Composite				-0.38
Stature	Short				+0.39 Tall
Strength	Frail				-0.53 Strong
Body depth	Shallow				-0.80 Deep
Dairy form	Tight Ribbed				+0.37 Open Ribbed
Rump angle	High Pins				-0.24 Sloped
Thurl width	Narrow				+0.90 Wide
Rear leg (side view)	Posty				-0.69 Sickled
Rear leg (rear view)	Hock-in				+0.29 Straight
Foot angle	Low Angle				+1.02 Steep Angle
Feet & Legs Score	Low				+0.87 High
Fore udder attachment	Loose				+2.94 Strong
Rear udder height	Low				+1.99 High
Rear udder width	Narrow				+1.82 Wide
Udder cleft	Weak				+0.53 Strong
Udder depth	Deep				+2.49 Shallow
Front teat placement	Wide				+1.03 Close
Rear teat placement	Wide				+0.79 Close
Teat length	Short				-0.95 Long



# HAGRID

823325  
624HO09125  
HOLDEUM001260233547

Born: 2023-6-12 HAGRID

Beta Caseine **A2A2** | Kappa Caseine **AA** | aAa **243165** | |

**TPI 3077** Milk lbs Fat Protein Daughters: 0  
**NM\$ 1002** +2097 +0.01 % +0.04 % Herds: 0  
 CM\$ 1013 +83 lbs +77 lbs Reliability: 79 %  
 FM\$ 930  
 GM\$ 957



**PL** Productive life +5.3 74 % Rel.  
**LIV** Livability -0.8 71 % Rel.  
**SCS** Somatic cell score +2.83 75 % Rel.  
**DPR** Daughter pregnancy rate -0.4 74 % Rel.  
**HCR** Heifer conception rate +1.8 72 % Rel.  
**CCR** Cow conception rate +0.7 74 % Rel.  
**FI** Fertility index +0.7 74 % Rel.  
**SCE** Sire calving ease 1.9 % 63 % Rel.  
**DCE** Daughter calving ease 2.0 % 57 % Rel.  
**SSB** Sire stillbirth 6.5 % 60 % Rel.  
**DSB** Daughter stillbirth 4.5 % 55 % Rel.  
**GL** Gestation length -1.5 72 % Rel.

♂ **Hypnotic** (♂ Moonshiner)

♀ Barb 17906 (♂ **Spot Lite**)

♀ Barb 15984 (2) VG 87 (♂ **Renegade**)

♀ Barba 1351 (2) VG 86 (♂ **Flagship**)



Hagrid

Proofs: 08-2024

823325 Hagrid		-1	0	+1	+2
PTAT	Type				+2.14
UDC	Udder Composite				+2.22
FLC	Feet & Legs Composite				+1.06
BSC	Body Composite				-0.19
Stature	Short				+0.88 Tall
Strength	Frail				+0.37 Strong
Body depth	Shallow				+0.39 Deep
Dairy form	Tight Ribbed				+1.53 Open Ribbed
Rump angle	High Pins				-0.65 Sloped
Thurl width	Narrow				+0.20 Wide
Rear leg (side view)	Posty				-0.71 Sickled
Rear leg (rear view)	Hock-in				+1.35 Straight
Foot angle	Low Angle				+1.44 Steep Angle
Feet & Legs Score	Low				+1.11 High
Fore udder attachment	Loose				+2.58 Strong
Rear udder height	Low				+3.13 High
Rear udder width	Narrow				+2.71 Wide
Udder cleft	Weak				+0.52 Strong
Udder depth	Deep				+1.69 Shallow
Front teat placement	Wide				+0.79 Close
Rear teat placement	Wide				+0.81 Close
Teat length	Short				+0.25 Long

# PERTH

691783  
624HO09122  
HOLDEUM000542431189

Born: 2023-7-31 CALMAC RUW PERTH

Beta Caseine **A1A2** | Kappa Caseine **BE** | aAa | |

**TPI 3040** Milk lbs Fat Protein Daughters: 0  
**NM\$ 1023** +603 +0.21 % +0.11 % Herds: 0  
 CM\$ 1045 +78 lbs +49 lbs Reliability: 79 %  
 FM\$ 870  
 GM\$ 1016



**PL** Productive life +7.2 74 % Rel.  
**LIV** Livability +4.2 71 % Rel.  
**SCS** Somatic cell score +2.73 74 % Rel.  
**DPR** Daughter pregnancy rate +2.9 73 % Rel.  
**HCR** Heifer conception rate +3.4 71 % Rel.  
**CCR** Cow conception rate +4.1 73 % Rel.  
**FI** Fertility index +3.6 73 % Rel.  
**SCE** Sire calving ease 1.2 % 61 % Rel.  
**DCE** Daughter calving ease 0.7 % 57 % Rel.  
**SSB** Sire stillbirth 4.7 % 57 % Rel.  
**DSB** Daughter stillbirth 2.2 % 55 % Rel.  
**GL** Gestation length -2.5 72 % Rel.

♂ **Pugetsound** (♂ AltaZazzle)

♀ Prog. Breakdown Emory GP 80 (♂ **Breakdown**)

♀ P. Robert Eeyore (1) GP 81 (♂ **AltaRobert**)

♀ Ri-Val-Re Razz Electra (1) VG 85 (♂ **Achiever**)



Perth

Proofs: 08-2024

691783 Perth		-1	0	+1	+2
PTAT	Type				+0.79
UDC	Udder Composite				+1.46
FLC	Feet & Legs Composite				+0.76
BSC	Body Composite				-0.42
Stature	Short				-0.10 Tall
Strength	Frail				-0.60 Strong
Body depth	Shallow				-1.13 Deep
Dairy form	Tight Ribbed				-0.28 Open Ribbed
Rump angle	High Pins				-0.66 Sloped
Thurl width	Narrow				-0.03 Wide
Rear leg (side view)	Posty				-0.51 Sickled
Rear leg (rear view)	Hock-in				+0.48 Straight
Foot angle	Low Angle				+0.77 Steep Angle
Feet & Legs Score	Low				+0.74 High
Fore udder attachment	Loose				+2.02 Strong
Rear udder height	Low				+1.33 High
Rear udder width	Narrow				+0.96 Wide
Udder cleft	Weak				+0.57 Strong
Udder depth	Deep				+1.77 Shallow
Front teat placement	Wide				+0.56 Close
Rear teat placement	Wide				+0.47 Close
Teat length	Short				-0.42 Long

# NEAL

811689  
624HO09101  
HOLDEUM000542061616

Born: 2022-2-6 PEAK RUW NEPTUN

Beta Caseine **A2A2** | Kappa Caseine **BB** | aAa **351426** |

**TPI 3028** Milk lbs Fat Protein Daughters: 0  
**NM\$ 1022** +1584 +0.07 % +0.05 % Herds: 0  
**CM\$ 1042** +81 lbs +64 lbs Reliability: 81 %  
**FM\$ 929**  
**GM\$ 952**

♂ **Nexus** (♂ AltaCabot)

♀ **Peak Maudie** (♂ Pursuit)

♀ **Pine-Tree Mandolin-ET** (♂ Medley)

♀ **My Octavia-ET (5) VG 87** (♂ Octoberfest)



Neal

Proofs: 08-2024



<b>PL</b>	Productive life	+7.2	76 % Rel.
<b>LIV</b>	Livability	+2.9	73 % Rel.
<b>SCS</b>	Somatic cell score	+2.49	78 % Rel.
<b>DPR</b>	Daughter pregnancy rate	+0.9	76 % Rel.
<b>HCR</b>	Heifer conception rate	+1.3	74 % Rel.
<b>CCR</b>	Cow conception rate	+2.0	75 % Rel.
<b>FI</b>	Fertility index	+1.8	75 % Rel.
<b>SCE</b>	Sire calving ease	2.0 %	78 % Rel.
<b>DCE</b>	Daughter calving ease	1.6 %	58 % Rel.
<b>SSB</b>	Sire stillbirth	5.8 %	66 % Rel.
<b>DSB</b>	Daughter stillbirth	4.4 %	58 % Rel.
<b>GL</b>	Gestation length	-1.2	75 % Rel.

811689 Neal		-1	0	+1	+2
PTAT	Type				+1.00
UDC	Udder Composite				+1.21
FLC	Feet & Legs Composite				+0.34
BSC	Body Composite				+1.17
Stature	Short				+0.36 Tall
Strength	Frail				+0.92 Strong
Body depth	Shallow				+0.01 Deep
Dairy form	Tight Ribbed				-0.48 Open Ribbed
Rump angle	High Pins				+0.26 Sloped
Thurl width	Narrow				+1.19 Wide
Rear leg (side view)	Posty				-0.25 Sickled
Rear leg (rear view)	Hock-in				+0.62 Straight
Foot angle	Low Angle				+0.59 Steep Angle
Feet & Legs Score	Low				+0.31 High
Fore udder attachment	Loose				+1.41 Strong
Rear udder height	Low				+1.26 High
Rear udder width	Narrow				+1.76 Wide
Udder cleft	Weak				+0.44 Strong
Udder depth	Deep				+1.25 Shallow
Front teat placement	Wide				+0.05 Close
Rear teat placement	Wide				+0.05 Close
Teat length	Short				+0.52 Long

# PICOBELLO

689780  
624HO09098  
HOLDEUM000541648398

Born: 2021-12-17 CALMAC RUW PICOBELLO

Beta Caseine **A2A2** | Kappa Caseine **AB** | aAa **243165** | **H5C**

**TPI 3023** Milk lbs Fat Protein Daughters: 0  
**NM\$ 1029** +1683 +0.08 % +0.02 % Herds: 0  
**CM\$ 1041** +87 lbs +59 lbs Reliability: 82 %  
**FM\$ 978**  
**GM\$ 993**

♂ **Pinball** (♂ Challenger)

♀ **Prog. Skywalker Kirk (2) GP 83** (♂ Skywalker)

♀ **Progenesis Fortune Kili (1) VG 85** (♂ Fortune)

♀ **Progenesis Abbott Kilo** (♂ Abbott)



Picobello

Proofs: 08-2024



<b>PL</b>	Productive life	+6.2	77 % Rel.
<b>LIV</b>	Livability	+1.9	72 % Rel.
<b>SCS</b>	Somatic cell score	+2.65	79 % Rel.
<b>DPR</b>	Daughter pregnancy rate	+0.6	77 % Rel.
<b>HCR</b>	Heifer conception rate	+0.9	75 % Rel.
<b>CCR</b>	Cow conception rate	+2.3	77 % Rel.
<b>FI</b>	Fertility index	+1.5	76 % Rel.
<b>SCE</b>	Sire calving ease	2.1 %	63 % Rel.
<b>DCE</b>	Daughter calving ease	2.6 %	61 % Rel.
<b>SSB</b>	Sire stillbirth	6.0 %	60 % Rel.
<b>DSB</b>	Daughter stillbirth	4.5 %	60 % Rel.
<b>GL</b>	Gestation length	+1.1	75 % Rel.

689780 Picobello		-1	0	+1	+2
PTAT	Type				+1.44
UDC	Udder Composite				+1.99
FLC	Feet & Legs Composite				-0.27
BSC	Body Composite				-0.13
Stature	Short				+0.52 Tall
Strength	Frail				-0.14 Strong
Body depth	Shallow				-0.26 Deep
Dairy form	Tight Ribbed				+0.55 Open Ribbed
Rump angle	High Pins				-0.18 Sloped
Thurl width	Narrow				+0.74 Wide
Rear leg (side view)	Posty				+0.12 Sickled
Rear leg (rear view)	Hock-in				-0.46 Straight
Foot angle	Low Angle				+0.15 Steep Angle
Feet & Legs Score	Low				-0.07 High
Fore udder attachment	Loose				+2.27 Strong
Rear udder height	Low				+3.13 High
Rear udder width	Narrow				+1.97 Wide
Udder cleft	Weak				+0.38 Strong
Udder depth	Deep				+1.71 Shallow
Front teat placement	Wide				-0.05 Close
Rear teat placement	Wide				+0.09 Close
Teat length	Short				-0.18 Long



# PUEBLO

691782  
624HO09124  
HOLDEUM000541755296

Born: 2023-6-26 COOKIECUTTER RUW PUEBLO

Beta Caseine **A2A2** | Kappa Caseine **AA** | aAa --- | |

**TPI 3011** Milk lbs Fat Protein Daughters: 0  
**NM\$1094** +1164 +0.17 % +0.08 % Herds: 0  
 CM\$ 1109 +89 lbs +57 lbs Reliability: 79 %  
 FM\$ 986  
 GM\$ 1071



♂ Pugetsound (♂ AltaZazzle)

♀ Cookiecutter Leandra (1) GP 80 (♂ Espionage)

Ø Lac.: 1/1 9775 4,75 464 3,74 366

♀ Cookiecutter Lemelia (1) GP 83 (♂ Huey)

Ø Lac.: 3/2 12757 4,33 552 3,63 463

♀ Quiet Brook Ladix (♂ Helix)



Pueblo

Proofs: 08-2024

<b>PL</b>	Productive life	+6.6	74 % Rel.
<b>LIV</b>	Livability	+1.6	71 % Rel.
<b>SCS</b>	Somatic cell score	+2.86	75 % Rel.
<b>DPR</b>	Daughter pregnancy rate	+0.9	74 % Rel.
<b>HCR</b>	Heifer conception rate	+1.1	72 % Rel.
<b>CCR</b>	Cow conception rate	+2.3	74 % Rel.
<b>FI</b>	Fertility index	+1.7	74 % Rel.
<b>SCE</b>	Sire calving ease	1.7 %	62 % Rel.
<b>DCE</b>	Daughter calving ease	1.8 %	57 % Rel.
<b>SSB</b>	Sire stillbirth	5.0 %	58 % Rel.
<b>DSB</b>	Daughter stillbirth	3.8 %	55 % Rel.
<b>GL</b>	Gestation length	-2.9	72 % Rel.

		-1	0	+1	+2
PTAT	Type				+1.15
UDC	Udder Composite				+1.58
FLC	Feet & Legs Composite				+0.32
BSC	Body Composite				-1.23
Stature	Short				-0.21 Tall
Strength	Frail				-0.86 Strong
Body depth	Shallow				-0.95 Deep
Dairy form	Tight Ribbed				+1.08 Open Ribbed
Rump angle	High Pins				-0.68 Sloped
Thurl width	Narrow				+0.11 Wide
Rear leg (side view)	Posty				-0.70 Sickled
Rear leg (rear view)	Hock-in				+0.16 Straight
Foot angle	Low Angle				+0.29 Steep Angle
Feet & Legs Score	Low				+0.29 High
Fore udder attachment	Loose				+1.60 Strong
Rear udder height	Low				+2.17 High
Rear udder width	Narrow				+1.84 Wide
Udder cleft	Weak				+0.40 Strong
Udder depth	Deep				+1.02 Shallow
Front teat placement	Wide				+0.12 Close
Rear teat placement	Wide				+0.00 Close
Teat length	Short				-0.48 Long

# PINTO P

691781  
624HO09123  
HOLDEUM000542141529

Born: 2023-6-18 TTM RUW PINTO P

Beta Caseine **A2A2** | Kappa Caseine **BB** | aAa --- | **Pp\*** |

**TPI 3009** Milk lbs Fat Protein Daughters: 0  
**NM\$1070** +787 +0.26 % +0.14 % Herds: 0  
 CM\$ 1097 +99 lbs +62 lbs Reliability: 79 %  
 FM\$ 883  
 GM\$ 1065



♂ Pugetsound (♂ AltaZazzle)

♀ TTM Eiffel PP (1) GP 80 (♂ Monument P)

Ø Lac.: -/-

♀ TTM Exuberant P (2) EX 90 (♂ Limelight P)

Ø Lac.: 2/2 12413 3,82 474 3,78 469

♀ TTM Exquisite P (3) VG 87 (♂ DG Charley)



Pinto

Proofs: 08-2024

<b>PL</b>	Productive life	+5.7	74 % Rel.
<b>LIV</b>	Livability	+2.6	71 % Rel.
<b>SCS</b>	Somatic cell score	+2.75	75 % Rel.
<b>DPR</b>	Daughter pregnancy rate	+1.4	74 % Rel.
<b>HCR</b>	Heifer conception rate	+1.3	72 % Rel.
<b>CCR</b>	Cow conception rate	+2.9	74 % Rel.
<b>FI</b>	Fertility index	+2.0	74 % Rel.
<b>SCE</b>	Sire calving ease	1.4 %	62 % Rel.
<b>DCE</b>	Daughter calving ease	1.6 %	57 % Rel.
<b>SSB</b>	Sire stillbirth	4.8 %	58 % Rel.
<b>DSB</b>	Daughter stillbirth	4.6 %	56 % Rel.
<b>GL</b>	Gestation length	-2.3	72 % Rel.

		-1	0	+1	+2
PTAT	Type				+0.33
UDC	Udder Composite				+1.06
FLC	Feet & Legs Composite				-0.45
BSC	Body Composite				-0.69
Stature	Short				-0.39 Tall
Strength	Frail				-0.67 Strong
Body depth	Shallow				-0.94 Deep
Dairy form	Tight Ribbed				-0.07 Open Ribbed
Rump angle	High Pins				+0.09 Sloped
Thurl width	Narrow				-0.44 Wide
Rear leg (side view)	Posty				-0.80 Sickled
Rear leg (rear view)	Hock-in				-0.73 Straight
Foot angle	Low Angle				+0.01 Steep Angle
Feet & Legs Score	Low				-0.44 High
Fore udder attachment	Loose				+1.17 Strong
Rear udder height	Low				+1.24 High
Rear udder width	Narrow				+1.12 Wide
Udder cleft	Weak				+0.11 Strong
Udder depth	Deep				+0.67 Shallow
Front teat placement	Wide				+0.19 Close
Rear teat placement	Wide				+0.39 Close
Teat length	Short				-0.30 Long



# MADTIME

823301  
624HO09096  
HOLDEUM000542202582

Born: 2022-6-1 PEAK RUW MADTIME

Beta Caseine **A2A2** | Kappa Caseine **BB** | aAa **513642** | |

**TPI 3007** Milk lbs Fat Protein Daughters: 0  
**NM\$ 1005** +1784 +0.05 % +0.05 % Herds: 0  
**CM\$ 1020** +83 lbs +71 lbs Reliability: 81 %  
**FM\$ 916**  
**GM\$ 936**

♂ Mahomes (♂ Eldorado)

♀ Maudie (♂ Pursuit)

♀ Mandolin (♂ Medley)

♀ Octavia (5) VG 87 (♂ Octoberfest)



Madtime

Proofs: 08-2024



<b>PL</b>	Productive life	+5.9	75 % Rel.
<b>LIV</b>	Livability	+1.5	72 % Rel.
<b>SCS</b>	Somatic cell score	+2.76	77 % Rel.
<b>DPR</b>	Daughter pregnancy rate	-0.6	75 % Rel.
<b>HCR</b>	Heifer conception rate	+2.0	72 % Rel.
<b>CCR</b>	Cow conception rate	+0.5	74 % Rel.
<b>FI</b>	Fertility index	+0.7	74 % Rel.
<b>SCE</b>	Sire calving ease	1.8 %	62 % Rel.
<b>DCE</b>	Daughter calving ease	1.7 %	61 % Rel.
<b>SSB</b>	Sire stillbirth	6.0 %	59 % Rel.
<b>DSB</b>	Daughter stillbirth	4.8 %	59 % Rel.
<b>GL</b>	Gestation length	-2.5	75 % Rel.

823301 Madtime		-1	0	+1	+2
PTAT	Type				+1.12
UDC	Udder Composite				+1.61
FLC	Feet & Legs Composite				+0.66
BSC	Body Composite				-0.42
Stature	Short				-0.91 Tall
Strength	Frail				-0.32 Strong
Body depth	Shallow				-0.82 Deep
Dairy form	Tight Ribbed				-0.11 Open Ribbed
Rump angle	High Pins				-0.17 Sloped
Thurl width	Narrow				+0.18 Wide
Rear leg (side view)	Posty				-0.74 Sickled
Rear leg (rear view)	Hock-in				+0.54 Straight
Foot angle	Low Angle				+0.40 Steep Angle
Feet & Legs Score	Low				+0.41 High
Fore udder attachment	Loose				+1.28 Strong
Rear udder height	Low				+1.92 High
Rear udder width	Narrow				+2.29 Wide
Udder cleft	Weak				+0.37 Strong
Udder depth	Deep				+0.32 Shallow
Front teat placement	Wide				+0.47 Close
Rear teat placement	Wide				+0.56 Close
Teat length	Short				-0.35 Long

# CAMIRO

760333  
624HO09126  
HOLDEUM000958220860

Born: 2023-7-17

Beta Caseine **A1A2** | Kappa Caseine **BB** | aAa **234156** | | **H6C**

**TPI 3001** Milk lbs Fat Protein Daughters: 0  
**NM\$ 1033** +1572 +0.08 % +0.05 % Herds: 0  
**CM\$ 1047** +81 lbs +63 lbs Reliability: 78 %  
**FM\$ 952**  
**GM\$ 963**

♂ Comeback (♂ Commitment)

♀ Dark Side (♂ AltaZazzle)

♀ Dark Di (1) GP 84 (♂ Dynamo)

♀ Delicia (3) VG 85 (♂ Supershot)



Camiro

Proofs: 08-2024



<b>PL</b>	Productive life	+6.1	74 % Rel.
<b>LIV</b>	Livability	+2.9	71 % Rel.
<b>SCS</b>	Somatic cell score	+2.76	74 % Rel.
<b>DPR</b>	Daughter pregnancy rate	-0.7	73 % Rel.
<b>HCR</b>	Heifer conception rate	-0.1	71 % Rel.
<b>CCR</b>	Cow conception rate	+0.7	73 % Rel.
<b>FI</b>	Fertility index	+0.2	73 % Rel.
<b>SCE</b>	Sire calving ease	1.3 %	61 % Rel.
<b>DCE</b>	Daughter calving ease	0.9 %	55 % Rel.
<b>SSB</b>	Sire stillbirth	5.0 %	56 % Rel.
<b>DSB</b>	Daughter stillbirth	3.5 %	53 % Rel.
<b>GL</b>	Gestation length	-2.1	72 % Rel.

760333 Camiro		-1	0	+1	+2
PTAT	Type				+1.56
UDC	Udder Composite				+1.73
FLC	Feet & Legs Composite				+1.05
BSC	Body Composite				-0.54
Stature	Short				+0.66 Tall
Strength	Frail				-0.30 Strong
Body depth	Shallow				-0.36 Deep
Dairy form	Tight Ribbed				+1.16 Open Ribbed
Rump angle	High Pins				+1.72 Sloped
Thurl width	Narrow				+0.58 Wide
Rear leg (side view)	Posty				-0.34 Sickled
Rear leg (rear view)	Hock-in				+1.03 Straight
Foot angle	Low Angle				+0.88 Steep Angle
Feet & Legs Score	Low				+1.16 High
Fore udder attachment	Loose				+1.91 Strong
Rear udder height	Low				+2.60 High
Rear udder width	Narrow				+2.09 Wide
Udder cleft	Weak				+0.11 Strong
Udder depth	Deep				+1.52 Shallow
Front teat placement	Wide				+0.13 Close
Rear teat placement	Wide				+0.23 Close
Teat length	Short				+0.10 Long

# GLENN EX 90

823284  
624HO09081  
HOLDEUM000541365201

Born: 2021-6-20 WIL GLENN

Beta Caseine **A1A2** | Kappa Caseine **BB** | aAa **315246** | |

**TPI 2993** Milk lbs Fat Protein Daughters: 0  
**NM\$978** +1675 +0.10 % +0.04 % Herds: 0  
 CM\$ 993 +91 lbs +63 lbs Reliability: 80 %  
 FM\$ 906  
 GM\$ 925



♂ **Gladius** (♂ Gazebo)

- ♀ HET SC Charlene ET (1) VG 87 (♂ **Soundcloud**)  
Ø Lac.: 1/1 12603 4,14 522 3,44 434
- ♀ HET SOU Chenile (1) VG 86 (♂ **Sound System**)  
Ø Lac.: 2/2 10682 4,08 436 3,63 388
- ♀ Diepenhoek Chanel (3) VG 87 (♂ **Balisto**)



WIL Glenn

Proofs: 08-2024

<b>PL</b>	Productive life	+4.7	76 % Rel.
<b>LIV</b>	Livability	-0.2	72 % Rel.
<b>SCS</b>	Somatic cell score	+2.62	77 % Rel.
<b>DPR</b>	Daughter pregnancy rate	-1.1	76 % Rel.
<b>HCR</b>	Heifer conception rate	+0.8	74 % Rel.
<b>CCR</b>	Cow conception rate	±0.0	75 % Rel.
<b>FI</b>	Fertility index	±0.0	75 % Rel.
<b>SCE</b>	Sire calving ease	2.3 %	77 % Rel.
<b>DCE</b>	Daughter calving ease	2.2 %	59 % Rel.
<b>SSB</b>	Sire stillbirth	6.0 %	64 % Rel.
<b>DSB</b>	Daughter stillbirth	4.7 %	58 % Rel.
<b>GL</b>	Gestation length	-0.6	72 % Rel.

		-1	0	+1	+2
PTAT	Type				+1.68
UDC	Udder Composite				+1.92
FLC	Feet & Legs Composite				+0.40
BSC	Body Composite				-0.38
Stature	Short				+1.66 Tall
Strength	Frail				-0.14 Strong
Body depth	Shallow				+0.18 Deep
Dairy form	Tight Ribbed				+1.66 Open Ribbed
Rump angle	High Pins				+0.22 Sloped
Thurl width	Narrow				+0.64 Wide
Rear leg (side view)	Posty				-0.02 Sickled
Rear leg (rear view)	Hock-in				+0.73 Straight
Foot angle	Low Angle				+0.48 Steep Angle
Feet & Legs Score	Low				+0.73 High
Fore udder attachment	Loose				+2.18 Strong
Rear udder height	Low				+2.73 High
Rear udder width	Narrow				+1.99 Wide
Udder cleft	Weak				+0.91 Strong
Udder depth	Deep				+2.62 Shallow
Front teat placement	Wide				+0.74 Close
Rear teat placement	Wide				+0.67 Close
Teat length	Short				-0.54 Long

# DABLINO

574385  
624HO09110  
HOLDEUM000124815989

Born: 2022-5-7

Beta Caseine **A2A2** | Kappa Caseine **BB** | aAa **342165** | |

**TPI 2991** Milk lbs Fat Protein Daughters: 0  
**NM\$1023** +1462 +0.17 % +0.09 % Herds: 0  
 CM\$ 1042 +101 lbs +71 lbs Reliability: 80 %  
 FM\$ 890  
 GM\$ 956



♂ **Dublin** (♂ Durable)

- ♀ E Lusty (0) VG 85 (♂ **Einstein**)  
Ø Lac.: -/-
- ♀ Luster (♂ **Tahiti**)  
Ø Lac.: -/-
- ♀ Lauri (1) VG 85 (♂ **Jedi**)



Dablino

Proofs: 08-2024

<b>PL</b>	Productive life	+5.0	75 % Rel.
<b>LIV</b>	Livability	+2.2	71 % Rel.
<b>SCS</b>	Somatic cell score	+2.82	76 % Rel.
<b>DPR</b>	Daughter pregnancy rate	-1.1	74 % Rel.
<b>HCR</b>	Heifer conception rate	+0.6	72 % Rel.
<b>CCR</b>	Cow conception rate	±0.0	74 % Rel.
<b>FI</b>	Fertility index	-0.2	74 % Rel.
<b>SCE</b>	Sire calving ease	1.6 %	61 % Rel.
<b>DCE</b>	Daughter calving ease	1.8 %	57 % Rel.
<b>SSB</b>	Sire stillbirth	5.8 %	56 % Rel.
<b>DSB</b>	Daughter stillbirth	4.9 %	56 % Rel.
<b>GL</b>	Gestation length	-1.0	72 % Rel.

		-1	0	+1	+2
PTAT	Type				+1.31
UDC	Udder Composite				+0.90
FLC	Feet & Legs Composite				+0.27
BSC	Body Composite				-0.21
Stature	Short				+0.47 Tall
Strength	Frail				+0.13 Strong
Body depth	Shallow				+0.29 Deep
Dairy form	Tight Ribbed				+1.28 Open Ribbed
Rump angle	High Pins				-0.40 Sloped
Thurl width	Narrow				+1.01 Wide
Rear leg (side view)	Posty				-0.13 Sickled
Rear leg (rear view)	Hock-in				+0.40 Straight
Foot angle	Low Angle				-0.04 Steep Angle
Feet & Legs Score	Low				+0.36 High
Fore udder attachment	Loose				+0.79 Strong
Rear udder height	Low				+0.98 High
Rear udder width	Narrow				+1.65 Wide
Udder cleft	Weak				+0.74 Strong
Udder depth	Deep				+0.59 Shallow
Front teat placement	Wide				+0.34 Close
Rear teat placement	Wide				+0.54 Close
Teat length	Short				+0.26 Long



# COMEBACK

619239  
624HO09115  
HOLDEUM001604442382

Born: 2021-7-12 WINSTAR COMEBACK

Beta Caseine **A1A2** | Kappa Caseine **BE** | aAa **231465** |

**TPI 2990** Milk lbs Fat Protein Daughters: 0  
**NM\$952** +1020 +0.22 % +0.09 % Herds: 0  
 CM\$ 972 +97 lbs +57 lbs Reliability: 81 %  
 FM\$ 819  
 GM\$ 873

♂ **Commitment** (♂ Complete)

♀ WinStar Entity 6062 (♂ **Entity**)  
 ∅ Loc.: -/  
 ♀ WinStar Spectre 4618 (1) GP 83 (♂ **Spectre**)  
 ∅ Loc.: 1/1 10970 5,27 578 3,83 420  
 ♀ End-Road Profit 2203 (3) EX 90 (♂ **Profit**)



<b>PL</b>	Productive life	+5.0	76 % Rel.
<b>LIV</b>	Livability	+3.3	72 % Rel.
<b>SCS</b>	Somatic cell score	+2.73	77 % Rel.
<b>DPR</b>	Daughter pregnancy rate	-1.0	75 % Rel.
<b>HCR</b>	Heifer conception rate	±0.0	72 % Rel.
<b>CCR</b>	Cow conception rate	-0.2	75 % Rel.
<b>FI</b>	Fertility index	-0.1	75 % Rel.
<b>SCE</b>	Sire calving ease	2.0 %	85 % Rel.
<b>DCE</b>	Daughter calving ease	1.2 %	58 % Rel.
<b>SSB</b>	Sire stillbirth	6.0 %	73 % Rel.
<b>DSB</b>	Daughter stillbirth	3.7 %	57 % Rel.
<b>GL</b>	Gestation length	-1.9	75 % Rel.



Comeback

Proofs: 08-2024

619239 Comeback		-1	0	+1	+2
PTAT	Type				+1.52
UDC	Udder Composite				+1.53
FLC	Feet & Legs Composite				+1.32
BSC	Body Composite				+0.30
Stature	Short				+0.94 Tall
Strength	Frail				+0.39 Strong
Body depth	Shallow				+0.16 Deep
Dairy form	Tight Ribbed				+0.59 Open Ribbed
Rump angle	High Pins				+1.59 Sloped
Thurl width	Narrow				+0.42 Wide
Rear leg (side view)	Posty				-0.79 Sickled
Rear leg (rear view)	Hock-in				+1.70 Straight
Foot angle	Low Angle				+1.00 Steep Angle
Feet & Legs Score	Low				+1.39 High
Fore udder attachment	Loose				+1.77 Strong
Rear udder height	Low				+2.16 High
Rear udder width	Narrow				+1.80 Wide
Udder cleft	Weak				+0.65 Strong
Udder depth	Deep				+1.55 Shallow
Front teat placement	Wide				+0.14 Close
Rear teat placement	Wide				+0.43 Close
Teat length	Short				-0.15 Long

# KRISPY

823290  
624HO09102  
HOLNLDM000889323731

Born: 2021-11-15 KRISPY

Beta Caseine **A2A2** | Kappa Caseine **AB** | aAa **435261** |

**TPI 2976** Milk lbs Fat Protein Daughters: 0  
**NM\$984** +1352 +0.15 % +0.08 % Herds: 0  
 CM\$ 1001 +92 lbs +64 lbs Reliability: 82 %  
 FM\$ 870  
 GM\$ 969

♂ **Pinball** (♂ Challenger)

♀ Progenesis Skywalker Kirk (2) GP 83 (♂ **Skywalker**)  
 ∅ Loc.: 2/2 13351 3,86 516 3,60 481  
 ♀ Progenesis Fortune Kili (1) VG 85 (♂ **Fortune**)  
 ∅ Loc.: 2/2 14105 4,12 581 3,42 483  
 ♀ Progenesis Abbott Kilo (♂ **Abbott**)



<b>PL</b>	Productive life	+4.9	77 % Rel.
<b>LIV</b>	Livability	+0.8	72 % Rel.
<b>SCS</b>	Somatic cell score	+2.84	79 % Rel.
<b>DPR</b>	Daughter pregnancy rate	+0.6	77 % Rel.
<b>HCR</b>	Heifer conception rate	+1.3	75 % Rel.
<b>CCR</b>	Cow conception rate	+2.0	77 % Rel.
<b>FI</b>	Fertility index	+1.6	76 % Rel.
<b>SCE</b>	Sire calving ease	2.0 %	81 % Rel.
<b>DCE</b>	Daughter calving ease	2.5 %	61 % Rel.
<b>SSB</b>	Sire stillbirth	5.5 %	69 % Rel.
<b>DSB</b>	Daughter stillbirth	4.6 %	60 % Rel.
<b>GL</b>	Gestation length	+0.3	75 % Rel.



Krispy

Proofs: 08-2024

823290 Krispy		-1	0	+1	+2
PTAT	Type				+1.28
UDC	Udder Composite				+1.53
FLC	Feet & Legs Composite				-0.45
BSC	Body Composite				-0.05
Stature	Short				+0.81 Tall
Strength	Frail				+0.06 Strong
Body depth	Shallow				+0.04 Deep
Dairy form	Tight Ribbed				+0.86 Open Ribbed
Rump angle	High Pins				+0.20 Sloped
Thurl width	Narrow				+0.72 Wide
Rear leg (side view)	Posty				+0.06 Sickled
Rear leg (rear view)	Hock-in				-0.52 Straight
Foot angle	Low Angle				-0.15 Steep Angle
Feet & Legs Score	Low				-0.17 High
Fore udder attachment	Loose				+1.90 Strong
Rear udder height	Low				+2.72 High
Rear udder width	Narrow				+1.79 Wide
Udder cleft	Weak				+0.18 Strong
Udder depth	Deep				+1.15 Shallow
Front teat placement	Wide				-0.08 Close
Rear teat placement	Wide				+0.10 Close
Teat length	Short				-0.61 Long

# ALJANO

823288  
624HO09104  
HOLDEUM001406595012

Born: 2021-8-9 SHA ALJANO

Beta Caseine **A2A2** | Kappa Caseine **AB** | aAa **243165** | | **H5C**

**TPI 2960** Milk lbs Fat Protein Daughters: 0  
**NM\$971** +1220 +0.15 % +0.10 % Herds: 0  
 CM\$ 988 +88 lbs +64 lbs Reliability: 81 %  
 FM\$ 842  
 GM\$ 927



**PL** Productive life +5.5 76 % Rel.  
**LIV** Livability +1.6 72 % Rel.  
**SCS** Somatic cell score +2.95 77 % Rel.  
**DPR** Daughter pregnancy rate +0.1 75 % Rel.  
**HCR** Heifer conception rate +0.7 73 % Rel.  
**CCR** Cow conception rate +1.3 75 % Rel.  
**FI** Fertility index +0.9 75 % Rel.  
**SCE** Sire calving ease 2.0 % 84 % Rel.  
**DCE** Daughter calving ease 1.6 % 58 % Rel.  
**SSB** Sire stillbirth 6.4 % 73 % Rel.  
**DSB** Daughter stillbirth 4.1 % 56 % Rel.  
**GL** Gestation length -0.7 75 % Rel.

♂ **Arrozo** (♂ **Renegade**)

- ♀ SHA Burundi (1) GP 83 (♂ **Riveting**)  
Ø Lac.: 2/1 9796 4,01 393 3,82 374
- ♀ SHA Busanga (1) VG 85 (♂ **Bubba**)  
Ø Lac.: 2/1 11006 3,95 435 3,61 397
- ♀ SHA Gorongosa (2) VG 87 (♂ **Rubicon**)



Aljano

Proofs: 08-2024

823288 Aljano		-1	0	+1	+2
PTAT	Type				+1.21
UDC	Udder Composite				+1.20
FLC	Feet & Legs Composite				+0.61
BSC	Body Composite				-0.16
Stature	Short				+0.15 Tall
Strength	Frail				+0.17 Strong
Body depth	Shallow				+0.10 Deep
Dairy form	Tight Ribbed				+0.80 Open Ribbed
Rump angle	High Pins				+1.05 Sloped
Thurl width	Narrow				+0.33 Wide
Rear leg (side view)	Posty				+0.27 Sickled
Rear leg (rear view)	Hock-in				+0.79 Straight
Foot angle	Low Angle				+0.39 Steep Angle
Feet & Legs Score	Low				+0.56 High
Fore udder attachment	Loose				+1.30 Strong
Rear udder height	Low				+1.75 High
Rear udder width	Narrow				+1.72 Wide
Udder cleft	Weak				+0.10 Strong
Udder depth	Deep				+0.55 Shallow
Front teat placement	Wide				+0.36 Close
Rear teat placement	Wide				+0.09 Close
Teat length	Short				+0.24 Long

# MANCHESTER

691039  
624HO09109  
HOLDEUM000542317418

Born: 2022-8-3 EILDON-TWEED RUW MANCHESTER

Beta Caseine **A1A2** | Kappa Caseine **BB** | aAa **243165** | |

**TPI 2959** Milk lbs Fat Protein Daughters: 0  
**NM\$1029** +706 +0.22 % +0.09 % Herds: 0  
 CM\$ 1051 +84 lbs +47 lbs Reliability: 81 %  
 FM\$ 896  
 GM\$ 979



**PL** Productive life +6.9 77 % Rel.  
**LIV** Livability +4.7 73 % Rel.  
**SCS** Somatic cell score +2.64 78 % Rel.  
**DPR** Daughter pregnancy rate +0.9 77 % Rel.  
**HCR** Heifer conception rate +1.5 75 % Rel.  
**CCR** Cow conception rate +2.3 77 % Rel.  
**FI** Fertility index +2.0 76 % Rel.  
**SCE** Sire calving ease 1.8 % 63 % Rel.  
**DCE** Daughter calving ease 1.6 % 61 % Rel.  
**SSB** Sire stillbirth 5.6 % 60 % Rel.  
**DSB** Daughter stillbirth 3.4 % 60 % Rel.  
**GL** Gestation length -1.2 75 % Rel.

♂ **Massey** (♂ **Legacy**)

- ♀ Eildon Tweed M Jersey (♂ **Maximus**)  
Ø Lac.: -/-
- ♀ Eildon-Tweed Ma Ldon (3) VG 88 (♂ **Marius**)  
Ø Lac.: 3/3 12860 4,23 544 3,41 439
- ♀ Genosource Mdsty Jersey 1 (1) GP 81 (♂ **Modesty**)



Manchester

Proofs: 08-2024

691039 Manchester		-1	0	+1	+2
PTAT	Type				+0.46
UDC	Udder Composite				+1.49
FLC	Feet & Legs Composite				+0.23
BSC	Body Composite				-0.99
Stature	Short				-0.21 Tall
Strength	Frail				-1.21 Strong
Body depth	Shallow				-1.42 Deep
Dairy form	Tight Ribbed				-0.14 Open Ribbed
Rump angle	High Pins				+0.34 Sloped
Thurl width	Narrow				-0.16 Wide
Rear leg (side view)	Posty				-0.11 Sickled
Rear leg (rear view)	Hock-in				-0.34 Straight
Foot angle	Low Angle				+0.18 Steep Angle
Feet & Legs Score	Low				+0.31 High
Fore udder attachment	Loose				+1.73 Strong
Rear udder height	Low				+1.72 High
Rear udder width	Narrow				+1.17 Wide
Udder cleft	Weak				+0.56 Strong
Udder depth	Deep				+1.45 Shallow
Front teat placement	Wide				+0.74 Close
Rear teat placement	Wide				+0.63 Close
Teat length	Short				-0.90 Long



# PILOT

101103  
624HO09103  
HOLDEUM000364282656

Born: 2022-6-21 GIESMANN GENETICS AMMERLAND P

Beta Caseine **A1A2** | Kappa Caseine **AB** | aAa **345216** |

**TPI 2925** Milk lbs Fat Protein Daughters: 0  
**NM\$916** +1648 -0.02 % +0.05 % Herds: 0  
 CM\$ 928 +58 lbs +65 lbs Reliability: 80 %  
 FM\$ 838  
 GM\$ 910

♂ Patch (♂ Timberlake)

♀ Jane (1) VG 85 (♂ Best Benz)

∅ Loc.: 200 T. 7247 4,19 304 3,59 260

♀ Juana (1) VG 85 (♂ Gymnast)

∅ Loc.: 1/1 12831 3,92 503 3,65 468

♀ Jolene (4) VG 87 (♂ Balisto)



GGA Pilot

Proofs: 08-2024



<b>PL</b>	Productive life	+5.8	74 % Rel.
<b>LIV</b>	Livability	+2.0	71 % Rel.
<b>SCS</b>	Somatic cell score	+2.84	74 % Rel.
<b>DPR</b>	Daughter pregnancy rate	+1.9	74 % Rel.
<b>HCR</b>	Heifer conception rate	+1.4	72 % Rel.
<b>CCR</b>	Cow conception rate	+3.4	74 % Rel.
<b>FI</b>	Fertility index	+2.8	74 % Rel.
<b>SCE</b>	Sire calving ease	1.8 %	60 % Rel.
<b>DCE</b>	Daughter calving ease	2.1 %	56 % Rel.
<b>SSB</b>	Sire stillbirth	5.6 %	56 % Rel.
<b>DSB</b>	Daughter stillbirth	4.7 %	54 % Rel.
<b>GL</b>	Gestation length	-1.0	72 % Rel.

101103 Pilot		-1	0	+1	+2
PTAT	Type				+0.91
UDC	Udder Composite				+1.30
FLC	Feet & Legs Composite				+0.92
BSC	Body Composite				+0.29
Stature	Short				+0.41 Tall
Strength	Frail				+0.32 Strong
Body depth	Shallow				-0.19 Deep
Dairy form	Tight Ribbed				+0.19 Open Ribbed
Rump angle	High Pins				-0.24 Sloped
Thurl width	Narrow				+0.43 Wide
Rear leg (side view)	Posty				-0.73 Sickled
Rear leg (rear view)	Hock-in				+1.13 Straight
Foot angle	Low Angle				+1.19 Steep Angle
Feet & Legs Score	Low				+0.89 High
Fore udder attachment	Loose				+1.32 Strong
Rear udder height	Low				+1.87 High
Rear udder width	Narrow				+1.96 Wide
Udder cleft	Weak				+0.07 Strong
Udder depth	Deep				+0.91 Shallow
Front teat placement	Wide				+0.17 Close
Rear teat placement	Wide				-0.15 Close
Teat length	Short				-0.02 Long

# MANITU

100033  
624HO09097  
HOLNLDM000573428566

Born: 2021-6-21 3STAR POPPE MANITU

Beta Caseine **A1A2** | Kappa Caseine **BB** | aAa **234165** |

**TPI 2923** Milk lbs Fat Protein Daughters: 0  
**NM\$830** +1543 +0.07 % +0.05 % Herds: 0  
 CM\$ 845 +78 lbs +63 lbs Reliability: 81 %  
 FM\$ 742  
 GM\$ 803

♂ Manhattan (♂ Positive)

♀ Poppe K&L Gorgina (♂ Durable)

∅ Loc.: 2/2 13628 4,09 558 3,39 462

♀ KHE I'm Good (3) VG 88 (♂ Gymnast)

∅ Loc.: 3/3 16985 3,77 641 3,24 550

♀ KHE Isolde (3) VG 87 (♂ Rubicon)



Manitu

Proofs: 08-2024



<b>PL</b>	Productive life	+3.7	76 % Rel.
<b>LIV</b>	Livability	+0.2	71 % Rel.
<b>SCS</b>	Somatic cell score	+2.70	77 % Rel.
<b>DPR</b>	Daughter pregnancy rate	-0.2	76 % Rel.
<b>HCR</b>	Heifer conception rate	+1.1	74 % Rel.
<b>CCR</b>	Cow conception rate	+0.6	75 % Rel.
<b>FI</b>	Fertility index	+0.6	75 % Rel.
<b>SCE</b>	Sire calving ease	2.2 %	84 % Rel.
<b>DCE</b>	Daughter calving ease	2.2 %	59 % Rel.
<b>SSB</b>	Sire stillbirth	5.2 %	71 % Rel.
<b>DSB</b>	Daughter stillbirth	4.8 %	58 % Rel.
<b>GL</b>	Gestation length	-2.2	75 % Rel.

100033 Manitu		-1	0	+1	+2
PTAT	Type				+1.73
UDC	Udder Composite				+1.83
FLC	Feet & Legs Composite				+0.42
BSC	Body Composite				-0.14
Stature	Short				+1.46 Tall
Strength	Frail				-0.02 Strong
Body depth	Shallow				+0.21 Deep
Dairy form	Tight Ribbed				+1.41 Open Ribbed
Rump angle	High Pins				+1.58 Sloped
Thurl width	Narrow				+1.07 Wide
Rear leg (side view)	Posty				-0.32 Sickled
Rear leg (rear view)	Hock-in				+0.44 Straight
Foot angle	Low Angle				+0.62 Steep Angle
Feet & Legs Score	Low				+0.78 High
Fore udder attachment	Loose				+2.47 Strong
Rear udder height	Low				+2.29 High
Rear udder width	Narrow				+2.28 Wide
Udder cleft	Weak				+0.28 Strong
Udder depth	Deep				+2.31 Shallow
Front teat placement	Wide				+0.56 Close
Rear teat placement	Wide				+0.50 Close
Teat length	Short				-0.36 Long

# GRAHAM

769555  
624HO09086  
HOLDEUM001505201168

Born: 2021-6-18 KHE GRAHAM

Beta Caseine **A1A2** | Kappa Caseine **AB** | aAa --- | |

**TPI 2880** Milk lbs Fat Protein Daughters: 0  
**NM\$879** +1787 +0.01 % +0.02 % Herds: 0  
 CM\$ 889 +71 lbs +62 lbs Reliability: 81 %  
 FM\$ 830  
 GM\$ 823

♂ **Gladius** ( ♂ Gazebo)

♀ **Ibrahima** (2) VG 87 ( ♂ **Gywer RDC**)

Ø Lac.: 2/1 10208 3,78 386 3,35 342

♀ **Ibiziana** (4) VG 89 ( ♂ **Salvatore**)

Ø Lac.: 4/4 12422 3,45 428 3,20 398

♀ **Ibiza** (1) GP 83 ( ♂ **Penley**)



Graham

Proofs: 08-2024



<b>PL</b>	Productive life	+4.9	76 % Rel.
<b>LIV</b>	Livability	+1.6	72 % Rel.
<b>SCS</b>	Somatic cell score	+2.71	77 % Rel.
<b>DPR</b>	Daughter pregnancy rate	-0.4	76 % Rel.
<b>HCR</b>	Heifer conception rate	-0.7	74 % Rel.
<b>CCR</b>	Cow conception rate	+0.6	75 % Rel.
<b>FI</b>	Fertility index	+0.3	75 % Rel.
<b>SCE</b>	Sire calving ease	1.7 %	76 % Rel.
<b>DCE</b>	Daughter calving ease	2.5 %	58 % Rel.
<b>SSB</b>	Sire stillbirth	5.6 %	63 % Rel.
<b>DSB</b>	Daughter stillbirth	5.3 %	58 % Rel.
<b>GL</b>	Gestation length	-0.1	71 % Rel.

769555 Graham		-1	0	+1	+2
PTAT	Type				+1.36
UDC	Udder Composite				+1.60
FLC	Feet & Legs Composite				+0.44
BSC	Body Composite				+0.15
Stature	Short				+1.19 Tall
Strength	Frail				+0.35 Strong
Body depth	Shallow				+0.43 Deep
Dairy form	Tight Ribbed				+0.96 Open Ribbed
Rump angle	High Pins				-0.05 Sloped
Thurl width	Narrow				+0.24 Wide
Rear leg (side view)	Posty				-1.50 Sickled
Rear leg (rear view)	Hock-in				+0.96 Straight
Foot angle	Low Angle				+0.87 Steep Angle
Feet & Legs Score	Low				+0.62 High
Fore udder attachment	Loose				+1.73 Strong
Rear udder height	Low				+2.21 High
Rear udder width	Narrow				+2.28 Wide
Udder cleft	Weak				+0.75 Strong
Udder depth	Deep				+1.33 Shallow
Front teat placement	Wide				+1.19 Close
Rear teat placement	Wide				+0.62 Close
Teat length	Short				-0.14 Long

# TUBUS

823283  
624HO09083  
HOLDEUM001504721087

Born: 2021-4-1 DHG TUBUS

Beta Caseine **A1A2** | Kappa Caseine **AA** | aAa **234156** | |

**TPI 2859** Milk lbs Fat Protein Daughters: 0  
**NM\$825** +1277 +0.03 % +0.05 % Herds: 0  
 CM\$ 839 +58 lbs +55 lbs Reliability: 82 %  
 FM\$ 740  
 GM\$ 803

♂ **Try Me** ( ♂ Resolve)

♀ **Cookiecutter Honorin-ET** (1) VG 87 ( ♂ **Basic**)

Ø Lac.: 1/1 13715 3,56 488 3,07 421

♀ **Cookiecutter MDY Honorit-ET** ( ♂ **Modesty**)

Ø Lac.: -/-

♀ **Coo. SSHOT Honor** (1) VG 85 ( ♂ **Supershot**)



Tubus

Proofs: 08-2024



<b>PL</b>	Productive life	+5.1	77 % Rel.
<b>LIV</b>	Livability	+1.3	74 % Rel.
<b>SCS</b>	Somatic cell score	+2.77	78 % Rel.
<b>DPR</b>	Daughter pregnancy rate	+0.9	77 % Rel.
<b>HCR</b>	Heifer conception rate	+2.8	75 % Rel.
<b>CCR</b>	Cow conception rate	+2.2	77 % Rel.
<b>FI</b>	Fertility index	+2.1	77 % Rel.
<b>SCE</b>	Sire calving ease	1.7 %	77 % Rel.
<b>DCE</b>	Daughter calving ease	1.8 %	61 % Rel.
<b>SSB</b>	Sire stillbirth	5.0 %	67 % Rel.
<b>DSB</b>	Daughter stillbirth	4.7 %	60 % Rel.
<b>GL</b>	Gestation length	-1.4	75 % Rel.

823283 Tubus		-1	0	+1	+2
PTAT	Type				+1.63
UDC	Udder Composite				+1.72
FLC	Feet & Legs Composite				+0.04
BSC	Body Composite				-0.12
Stature	Short				+1.76 Tall
Strength	Frail				-0.04 Strong
Body depth	Shallow				+0.00 Deep
Dairy form	Tight Ribbed				+1.08 Open Ribbed
Rump angle	High Pins				+0.91 Sloped
Thurl width	Narrow				+0.04 Wide
Rear leg (side view)	Posty				-0.34 Sickled
Rear leg (rear view)	Hock-in				+0.25 Straight
Foot angle	Low Angle				+0.73 Steep Angle
Feet & Legs Score	Low				+0.44 High
Fore udder attachment	Loose				+1.98 Strong
Rear udder height	Low				+2.39 High
Rear udder width	Narrow				+1.93 Wide
Udder cleft	Weak				+0.96 Strong
Udder depth	Deep				+2.27 Shallow
Front teat placement	Wide				+1.28 Close
Rear teat placement	Wide				+1.28 Close
Teat length	Short				-0.51 Long



# BENEDETTO

811683  
624HO09108  
HOLDEUM001505219849

Born: 2021-10-18

Beta Caseine **A2A2** | Kappa Caseine **BB** | aAa **234156** |

**TPI 2854**    Milk lbs    Fat    Protein    Daughters: 0  
**NM\$844**    +1167    +0.01 %    +0.05 %    Herds: 0  
**CM\$ 858**       +47 lbs    +50 lbs    Reliability: 81 %  
**FM\$ 764**  
**GM\$ 867**

♂ **Bender** (♂ Bali)

♀ **Lenny** (1) VG 86 (♂ **Garido**)

∅ Loc.: 2/1 13885 4,03 559 3,56 494

♀ **Lina** (1) GP 83 (♂ **Balu**)

∅ Loc.: 2/1 7680 4,24 326 3,82 293

♀ **Lilly** (1) VG 86 (♂ **Commander**)



Benedetto

Proofs: 08-2024



<b>PL</b>	Productive life	+5.8	76 % Rel.
<b>LIV</b>	Livability	+2.0	72 % Rel.
<b>SCS</b>	Somatic cell score	+2.72	77 % Rel.
<b>DPR</b>	Daughter pregnancy rate	+3.1	76 % Rel.
<b>HCR</b>	Heifer conception rate	+2.6	73 % Rel.
<b>CCR</b>	Cow conception rate	+4.8	74 % Rel.
<b>FI</b>	Fertility index	+4.0	74 % Rel.
<b>SCE</b>	Sire calving ease	1.3 %	76 % Rel.
<b>DCE</b>	Daughter calving ease	1.1 %	58 % Rel.
<b>SSB</b>	Sire stillbirth	5.1 %	62 % Rel.
<b>DSB</b>	Daughter stillbirth	2.5 %	57 % Rel.
<b>GL</b>	Gestation length	-1.9	71 % Rel.

811683 Benedetto	-1	0	+1	+2
PTAT Type				+0.61
UDC Udder Composite				+1.05
FLC Feet & Legs Composite				+0.89
BSC Body Composite				-0.39

Stature	Short			-0.51 Tall
Strength	Frail			-0.32 Strong
Body depth	Shallow			-0.92 Deep
Dairy form	Tight Ribbed			-0.04 Open Ribbed
Rump angle	High Pins			-1.14 Sloped
Thurl width	Narrow			+0.06 Wide
Rear leg (side view)	Posty			+0.78 Sickled
Rear leg (rear view)	Hock-in			+0.80 Straight
Foot angle	Low Angle			-0.12 Steep Angle
Feet & Legs Score	Low			+0.77 High
Fore udder attachment	Loose			+1.35 Strong
Rear udder height	Low			+1.07 High
Rear udder width	Narrow			+0.90 Wide
Udder cleft	Weak			+0.01 Strong
Udder depth	Deep			+1.10 Shallow
Front teat placement	Wide			-0.47 Close
Rear teat placement	Wide			-0.55 Close
Teat length	Short			-0.06 Long

# GOLF

159002  
624HO09079  
HOLNLDM000690845680

Born: 2019-12-14 WESTENRADE GOLF

Beta Caseine **A2A2** | Kappa Caseine **AB** | aAa **342561** |

**TPI 2839**    Milk lbs    Fat    Protein    Daughters: 0  
**NM\$736**    +782    +0.16 %    +0.10 %    Herds: 0  
**CM\$ 756**       +73 lbs    +52 lbs    Reliability: 81 %  
**FM\$ 596**  
**GM\$ 706**

♂ **Garido** (♂ Gymnast)

♀ **Westenrade Annie** 174 (3) VG 87 (♂ **Finder**)

∅ Loc.: 3/2 10439 4,98 520 4,03 421

♀ **Westenr. Annie** 167 (4) VG 88 (♂ **AltaSpring**)

∅ Loc.: 5/4 12420 3,91 486 3,62 449

♀ **Westenr. Annie** 156 (1) VG 87 (♂ **Goldday**)



Golf

Proofs: 08-2024



<b>PL</b>	Productive life	+2.9	76 % Rel.
<b>LIV</b>	Livability	-0.5	72 % Rel.
<b>SCS</b>	Somatic cell score	+2.79	77 % Rel.
<b>DPR</b>	Daughter pregnancy rate	-0.7	76 % Rel.
<b>HCR</b>	Heifer conception rate	+0.1	74 % Rel.
<b>CCR</b>	Cow conception rate	+0.7	76 % Rel.
<b>FI</b>	Fertility index	+0.3	75 % Rel.
<b>SCE</b>	Sire calving ease	1.8 %	83 % Rel.
<b>DCE</b>	Daughter calving ease	1.3 %	59 % Rel.
<b>SSB</b>	Sire stillbirth	5.6 %	70 % Rel.
<b>DSB</b>	Daughter stillbirth	4.4 %	58 % Rel.
<b>GL</b>	Gestation length	-3.0	72 % Rel.

159002 Golf	-1	0	+1	+2
PTAT Type				+1.59
UDC Udder Composite				+1.83
FLC Feet & Legs Composite				+1.36
BSC Body Composite				+1.21

Stature	Short			+1.33 Tall
Strength	Frail			+1.18 Strong
Body depth	Shallow			+0.66 Deep
Dairy form	Tight Ribbed			+0.47 Open Ribbed
Rump angle	High Pins			-0.84 Sloped
Thurl width	Narrow			+1.30 Wide
Rear leg (side view)	Posty			-0.81 Sickled
Rear leg (rear view)	Hock-in			+1.95 Straight
Foot angle	Low Angle			+1.09 Steep Angle
Feet & Legs Score	Low			+1.48 High
Fore udder attachment	Loose			+2.39 Strong
Rear udder height	Low			+2.42 High
Rear udder width	Narrow			+2.27 Wide
Udder cleft	Weak			+0.46 Strong
Udder depth	Deep			+2.19 Shallow
Front teat placement	Wide			+0.20 Close
Rear teat placement	Wide			+0.10 Close
Teat length	Short			+0.27 Long

# BALTIC PP

823294  
624HO09107  
HOLDEUM001504753274

Born: 2021-12-25 BALTIC PP

Beta Caseine **A2A2** | Kappa Caseine **AB** | aAa **432561** | **PP\***

**TPI 2745** Milk lbs Fat Protein Daughters: 0  
**NM\$624** +602 +0.13 % +0.10 % Herds: 0  
 CM\$ 643 +58 lbs +44 lbs Reliability: 80 %  
 FM\$ 494  
 GM\$ 604

♂ Brandung P (♂ Bali)

♀ Cocktail-P (♂ Builder P)

♀ Chantre (1) GP 84 (♂ Yoyo)

♀ Charlize (2) VG 86 (♂ Silver)



Baltic PP

Proofs: 08-2024



<b>PL</b>	Productive life	+4.5	75 % Rel.
<b>LIV</b>	Livability	+1.0	71 % Rel.
<b>SCS</b>	Somatic cell score	+2.75	76 % Rel.
<b>DPR</b>	Daughter pregnancy rate	+1.8	74 % Rel.
<b>HCR</b>	Heifer conception rate	+0.5	71 % Rel.
<b>CCR</b>	Cow conception rate	+2.7	74 % Rel.
<b>FI</b>	Fertility index	+2.1	73 % Rel.
<b>SCE</b>	Sire calving ease	2.2 %	81 % Rel.
<b>DCE</b>	Daughter calving ease	1.9 %	57 % Rel.
<b>SSB</b>	Sire stillbirth	6.4 %	68 % Rel.
<b>DSB</b>	Daughter stillbirth	5.1 %	56 % Rel.
<b>GL</b>	Gestation length	-1.3	72 % Rel.

823294 Baltic PP		-1	0	+1	+2
PTAT	Type				+1.29
UDC	Udder Composite				+1.00
FLC	Feet & Legs Composite				+0.67
BSC	Body Composite				+1.68
Stature	Short				+1.75 Tall
Strength	Frail				+1.50 Strong
Body depth	Shallow				+1.00 Deep
Dairy form	Tight Ribbed				+0.12 Open Ribbed
Rump angle	High Pins				+2.11 Sloped
Thurl width	Narrow				+1.05 Wide
Rear leg (side view)	Posty				-0.69 Sickled
Rear leg (rear view)	Hock-in				+0.85 Straight
Foot angle	Low Angle				+1.57 Steep Angle
Feet & Legs Score	Low				+1.01 High
Fore udder attachment	Loose				+1.82 Strong
Rear udder height	Low				+1.20 High
Rear udder width	Narrow				+1.42 Wide
Udder cleft	Weak				+0.41 Strong
Udder depth	Deep				+1.66 Shallow
Front teat placement	Wide				+0.06 Close
Rear teat placement	Wide				+0.18 Close
Teat length	Short				-0.06 Long

# HADIL PP

811673  
624HO09093  
HOLDEUM000541494488

Born: 2021-4-11 HFP HADIL PP

Beta Caseine **A2A2** | Kappa Caseine **AB** | aAa **432561** | **PP\***

**TPI 2622** Milk lbs Fat Protein Daughters: 0  
**NM\$485** +859 -0.02 % +0.04 % Herds: 0  
 CM\$ 498 +27 lbs +38 lbs Reliability: 81 %  
 FM\$ 420  
 GM\$ 504

♂ Hesekiel PP (♂ Hotspot P)

♀ HFP Keeva (3) VG 89 (♂ Adlon P)

♀ WIL Kira (3) VG 88 (♂ Superhero)

♀ WIL Kati (1) VG 85 (♂ Penley)



Hadil PP

Proofs: 08-2024



<b>PL</b>	Productive life	+3.6	76 % Rel.
<b>LIV</b>	Livability	-1.4	72 % Rel.
<b>SCS</b>	Somatic cell score	+2.73	77 % Rel.
<b>DPR</b>	Daughter pregnancy rate	+1.9	76 % Rel.
<b>HCR</b>	Heifer conception rate	+3.8	73 % Rel.
<b>CCR</b>	Cow conception rate	+3.9	74 % Rel.
<b>FI</b>	Fertility index	+3.3	74 % Rel.
<b>SCE</b>	Sire calving ease	1.9 %	80 % Rel.
<b>DCE</b>	Daughter calving ease	1.9 %	58 % Rel.
<b>SSB</b>	Sire stillbirth	6.0 %	66 % Rel.
<b>DSB</b>	Daughter stillbirth	5.8 %	58 % Rel.
<b>GL</b>	Gestation length	-0.9	71 % Rel.

811673 Hadil PP		-1	0	+1	+2
PTAT	Type				+1.19
UDC	Udder Composite				+1.69
FLC	Feet & Legs Composite				+0.54
BSC	Body Composite				+0.40
Stature	Short				+1.14 Tall
Strength	Frail				+0.16 Strong
Body depth	Shallow				-0.17 Deep
Dairy form	Tight Ribbed				+0.16 Open Ribbed
Rump angle	High Pins				+0.89 Sloped
Thurl width	Narrow				+0.65 Wide
Rear leg (side view)	Posty				-1.22 Sickled
Rear leg (rear view)	Hock-in				+0.90 Straight
Foot angle	Low Angle				+0.67 Steep Angle
Feet & Legs Score	Low				+0.74 High
Fore udder attachment	Loose				+2.38 Strong
Rear udder height	Low				+1.74 High
Rear udder width	Narrow				+1.47 Wide
Udder cleft	Weak				+0.17 Strong
Udder depth	Deep				+3.03 Shallow
Front teat placement	Wide				-0.01 Close
Rear teat placement	Wide				+0.26 Close
Teat length	Short				-0.09 Long



# MO RED PP

823295  
624WW09105  
HOLDEUM000541743745

Born: 2022-1-12 MO PP-RED-ET

Beta Caseine **A2A2** | Kappa Caseine **AB** | aAa **423615** | **PP\***

**TPI 2821** Milk lbs Fat Protein Daughters: 0  
**NM\$750** +1099 +0.10 % +0.05 % Herds: 0  
**CM\$ 767** +70 lbs +49 lbs Reliability: 81 %  
**FM\$ 662**  
**GM\$ 678**



♂ McDonald (♂ Ronald)

♀ Koepon RUW Serena Red P (2) VG 88 (♂ Match P)

∅ Lac.: 2/1 11317 3,91 443 3,54 401

♀ Koe. Slvtr Sanne 8-ET (3) VG 89 (♂ Salvatore)

∅ Lac.: 3/3 12265 4,10 503 3,30 405

♀ DG HS Schr. Sanne (2) VG 87 (♂ Delta 1427)



Mo Red PP

Proofs: 08-2024

<b>PL</b>	Productive life	+4.4	75 % Rel.
<b>LIV</b>	Livability	-0.1	72 % Rel.
<b>SCS</b>	Somatic cell score	+2.60	77 % Rel.
<b>DPR</b>	Daughter pregnancy rate	-1.0	74 % Rel.
<b>HCR</b>	Heifer conception rate	-0.4	74 % Rel.
<b>CCR</b>	Cow conception rate	-0.7	74 % Rel.
<b>FI</b>	Fertility index	-0.6	74 % Rel.
<b>SCE</b>	Sire calving ease	2.0 %	80 % Rel.
<b>DCE</b>	Daughter calving ease	2.3 %	59 % Rel.
<b>SSB</b>	Sire stillbirth	5.9 %	68 % Rel.
<b>DSB</b>	Daughter stillbirth	5.1 %	58 % Rel.
<b>GL</b>	Gestation length	-1.3	73 % Rel.

		-1	0	+1	+2
PTAT	Type				+2.20
UDC	Udder Composite				+1.78
FLC	Feet & Legs Composite				+1.05
BSC	Body Composite				+0.90
Stature	Short				+2.74 Tall
Strength	Frail				+0.85 Strong
Body depth	Shallow				+0.80 Deep
Dairy form	Tight Ribbed				+1.34 Open Ribbed
Rump angle	High Pins				-0.21 Sloped
Thurl width	Narrow				+1.29 Wide
Rear leg (side view)	Posty				-0.51 Sickled
Rear leg (rear view)	Hock-in				+1.60 Straight
Foot angle	Low Angle				+2.24 Steep Angle
Feet & Legs Score	Low				+1.50 High
Fore udder attachment	Loose				+2.65 Strong
Rear udder height	Low				+2.71 High
Rear udder width	Narrow				+2.11 Wide
Udder cleft	Weak				+0.20 Strong
Udder depth	Deep				+3.03 Shallow
Front teat placement	Wide				+0.37 Close
Rear teat placement	Wide				+0.06 Close
Teat length	Short				+0.09 Long

# HOLMER PP

924775  
624WW09091  
HOLDEUM000541082332

Born: 2021-3-19 THI HOLMER PP

Beta Caseine **A1A2** | Kappa Caseine **BB** | aAa **432561** | **PP\***

**TPI 2634** Milk lbs Fat Protein Daughters: 0  
**NM\$707** +51 +0.17 % +0.08 % Herds: 0  
**CM\$ 726** +45 lbs +23 lbs Reliability: 79 %  
**FM\$ 596**  
**GM\$ 712**



♂ Host PP RDC (♂ Hotspot P)

♀ Hul-St. Amerika P RDC (2) VG 88 (♂ Match P RDC)

∅ Lac.: 3/2 9810 4,87 478 3,79 372

♀ Hul-Stein Angela (2) VG 85 (♂ Salvatore RDC)

∅ Lac.: 3/2 9592 4,49 431 3,64 349

♀ Angie Red (1) GP 84 (♂ Symion RDC)



Holmer PP

Proofs: 08-2024

<b>PL</b>	Productive life	+5.7	74 % Rel.
<b>LIV</b>	Livability	+2.6	70 % Rel.
<b>SCS</b>	Somatic cell score	+2.66	74 % Rel.
<b>DPR</b>	Daughter pregnancy rate	+2.4	73 % Rel.
<b>HCR</b>	Heifer conception rate	+2.4	71 % Rel.
<b>CCR</b>	Cow conception rate	+2.9	73 % Rel.
<b>FI</b>	Fertility index	+2.6	73 % Rel.
<b>SCE</b>	Sire calving ease	1.4 %	82 % Rel.
<b>DCE</b>	Daughter calving ease	2.2 %	53 % Rel.
<b>SSB</b>	Sire stillbirth	5.3 %	70 % Rel.
<b>DSB</b>	Daughter stillbirth	6.2 %	52 % Rel.
<b>GL</b>	Gestation length	+0.2	70 % Rel.

		-1	0	+1	+2
PTAT	Type				+0.11
UDC	Udder Composite				+1.25
FLC	Feet & Legs Composite				+0.52
BSC	Body Composite				-0.72
Stature	Short				-0.83 Tall
Strength	Frail				-1.21 Strong
Body depth	Shallow				-1.74 Deep
Dairy form	Tight Ribbed				-1.44 Open Ribbed
Rump angle	High Pins				-0.97 Sloped
Thurl width	Narrow				-1.16 Wide
Rear leg (side view)	Posty				-1.44 Sickled
Rear leg (rear view)	Hock-in				+0.64 Straight
Foot angle	Low Angle				+0.59 Steep Angle
Feet & Legs Score	Low				+0.25 High
Fore udder attachment	Loose				+2.38 Strong
Rear udder height	Low				+1.11 High
Rear udder width	Narrow				-0.05 Wide
Udder cleft	Weak				-1.12 Strong
Udder depth	Deep				+3.01 Shallow
Front teat placement	Wide				-1.80 Close
Rear teat placement	Wide				-1.66 Close
Teat length	Short				+1.27 Long

# FARAMIR

960809  
624WW09112  
HOLDEUM000667763499

Born: 2022-2-24 HLB HWH FARAMI

Beta Caseine **A2A2** | Kappa Caseine **AB** | aAa **234165** | |

**TPI 2897** Milk lbs Fat Protein Daughters: 0  
**NM\$879** +1142 +0.14 % +0.07 % Herds: 0  
 CM\$ 898 +80 lbs +55 lbs Reliability: 81 %  
 FM\$ 770  
 GM\$ 811

♂ Freestyle (♂ Gywer RDC)

- ♀ HLB Peru P RDC (2) VG 85 (♂ Solitaire P)  
Ø Lac.: 3/2 14103 4,06 572 3,56 502
- ♀ HLB Pinie P (1) GP 84 (♂ Mission P RDC)  
Ø Lac.: 4/4 11426 4,45 509 3,47 397
- ♀ HWH Pixel (0)VG 85 (♂ Background)



Faramir

Proofs: 08-2024



<b>PL</b>	Productive life	+5.7	76 % Rel.
<b>LIV</b>	Livability	+2.8	72 % Rel.
<b>SCS</b>	Somatic cell score	+2.63	77 % Rel.
<b>DPR</b>	Daughter pregnancy rate	+0.1	76 % Rel.
<b>HCR</b>	Heifer conception rate	+0.9	74 % Rel.
<b>CCR</b>	Cow conception rate	+0.9	75 % Rel.
<b>FI</b>	Fertility index	+1.0	75 % Rel.
<b>SCE</b>	Sire calving ease	1.7 %	70 % Rel.
<b>DCE</b>	Daughter calving ease	2.2 %	59 % Rel.
<b>SSB</b>	Sire stillbirth	6.0 %	60 % Rel.
<b>DSB</b>	Daughter stillbirth	6.2 %	57 % Rel.
<b>GL</b>	Gestation length	-1.6	70 % Rel.

960809 Faramir		-1	0	+1	+2
PTAT	Type				+1.05
UDC	Udder Composite				+1.20
FLC	Feet & Legs Composite				+0.59
BSC	Body Composite				+0.54
Stature	Short				+1.49 Tall
Strength	Frail				+0.37 Strong
Body depth	Shallow				+0.22 Deep
Dairy form	Tight Ribbed				+0.37 Open Ribbed
Rump angle	High Pins				+0.63 Sloped
Thurl width	Narrow				+0.52 Wide
Rear leg (side view)	Posty				-0.34 Sickled
Rear leg (rear view)	Hock-in				+1.25 Straight
Foot angle	Low Angle				+1.22 Steep Angle
Feet & Legs Score	Low				+0.73 High
Fore udder attachment	Loose				+1.75 Strong
Rear udder height	Low				+1.32 High
Rear udder width	Narrow				+1.27 Wide
Udder cleft	Weak				+0.29 Strong
Udder depth	Deep				+2.33 Shallow
Front teat placement	Wide				+0.30 Close
Rear teat placement	Wide				+0.17 Close
Teat length	Short				-0.09 Long

# SPOOKY RED

917693  
624WW09113  
HOLDEUM000771139284

Born: 2021-10-10 VOORHOF 3STAR RUW SPOOKY RED

Beta Caseine **A1A1** | Kappa Caseine **BB** | aAa **342516** | |

**TPI 2844** Milk lbs Fat Protein Daughters: 0  
**NM\$876** +1738 +00 % +0.01 % Herds: 0  
 CM\$ 887 +67 lbs +58 lbs Reliability: 81 %  
 FM\$ 836  
 GM\$ 826

♂ Star P RDC (♂ Solitaire P)

- ♀ Voorhof K&L Kacy (1) VG 85 (♂ Match P RDC)  
Ø Lac.: 2/2 11850 3,82 453 3,20 379
- ♀ WIL Kor RDC (♂ Salvatore RDC)  
Ø Lac.: 3/2 10659 4,03 430 3,25 346
- ♀ WIL K 25 (4) EX 90 (♂ Brekem RDC)



Spooky Red

Proofs: 08-2024



<b>PL</b>	Productive life	+5.3	76 % Rel.
<b>LIV</b>	Livability	+0.9	72 % Rel.
<b>SCS</b>	Somatic cell score	+2.61	76 % Rel.
<b>DPR</b>	Daughter pregnancy rate	-0.2	75 % Rel.
<b>HCR</b>	Heifer conception rate	+1.0	73 % Rel.
<b>CCR</b>	Cow conception rate	+0.9	74 % Rel.
<b>FI</b>	Fertility index	+0.7	74 % Rel.
<b>SCE</b>	Sire calving ease	1.8 %	79 % Rel.
<b>DCE</b>	Daughter calving ease	2.6 %	58 % Rel.
<b>SSB</b>	Sire stillbirth	5.5 %	65 % Rel.
<b>DSB</b>	Daughter stillbirth	5.0 %	57 % Rel.
<b>GL</b>	Gestation length	-0.9	70 % Rel.

917693 Spooky Red		-1	0	+1	+2
PTAT	Type				+0.98
UDC	Udder Composite				+1.06
FLC	Feet & Legs Composite				+0.48
BSC	Body Composite				-0.16
Stature	Short				+0.49 Tall
Strength	Frail				+0.00 Strong
Body depth	Shallow				-0.16 Deep
Dairy form	Tight Ribbed				+0.67 Open Ribbed
Rump angle	High Pins				+0.20 Sloped
Thurl width	Narrow				+0.35 Wide
Rear leg (side view)	Posty				+0.13 Sickled
Rear leg (rear view)	Hock-in				+0.69 Straight
Foot angle	Low Angle				+0.93 Steep Angle
Feet & Legs Score	Low				+0.48 High
Fore udder attachment	Loose				+1.36 Strong
Rear udder height	Low				+1.64 High
Rear udder width	Narrow				+1.48 Wide
Udder cleft	Weak				-0.45 Strong
Udder depth	Deep				+1.39 Shallow
Front teat placement	Wide				-0.51 Close
Rear teat placement	Wide				-0.76 Close
Teat length	Short				+0.90 Long



# GARETT EX 91

823221  
624HO09050  
HOLDEUM001504336100

Born: 2018-2-4 GARETT

Beta Caseine **A1A2** | Kappa Caseine **BB** | aAa **342516** |

**TPI 2947** Milk lbs Fat Protein Daughters: 2983  
**NM\$852** +2443 -0.19 % +0.01 % Herds: 770  
 CM\$ 864 +41 lbs +80 lbs Reliability: 86 %  
 FM\$ 809  
 GM\$ 789



♂ **Garick** (♂ Madron)

♀ Aria 3826 (3) VG 87 (♂ **AltaSpring**)

∅ Lac.: 4/2 12690 4,22 535 3,33 422

♀ Aria 2815 (2) VG 88 (♂ **MVP**)

∅ Lac.: 2/2 11435 4,93 564 3,59 410

♀ Adore 2500 (1) GP 83 (♂ **Epic**)



GARETT daughter Elefanti Lea VG 87

Proofs: 08-2024

<b>PL</b>	Productive life	+5.9	70 % Rel.
<b>LIV</b>	Livability	+0.1	54 % Rel.
<b>SCS</b>	Somatic cell score	+2.62	82 % Rel.
<b>DPR</b>	Daughter pregnancy rate	-0.6	77 % Rel.
<b>HCR</b>	Heifer conception rate	+3.6	% Rel.
<b>CCR</b>	Cow conception rate	+2.9	70 % Rel.
<b>FI</b>	Fertility index	+1.6	- % Rel.
<b>SCE</b>	Sire calving ease	1.8 %	68 % Rel.
<b>DCE</b>	Daughter calving ease	3.1 %	56 % Rel.
<b>SSB</b>	Sire stillbirth	5.8 %	50 % Rel.
<b>DSB</b>	Daughter stillbirth	8.2 %	67 % Rel.
<b>GL</b>	Gestation length	±0.0	% Rel.

823221 Garrett		-1	0	+1	+2
PTAT	Type				+1.42
UDC	Udder Composite				+1.98
FLC	Feet & Legs Composite				+1.93
BSC	Body Composite				+0.74
Stature	Short				+0.03 Tall
Strength	Frail				+0.92 Strong
Body depth	Shallow				+0.70 Deep
Dairy form	Tight Ribbed				+0.26 Open Ribbed
Rump angle	High Pins				+0.35 Sloped
Thurl width	Narrow				+0.81 Wide
Rear leg (side view)	Posty				-2.08 Sickled
Rear leg (rear view)	Hock-in				+2.38 Straight
Foot angle	Low Angle				+1.77 Steep Angle
Feet & Legs Score	Low				+1.73 High
Fore udder attachment	Loose				+2.07 Strong
Rear udder height	Low				+2.68 High
Rear udder width	Narrow				+2.56 Wide
Udder cleft	Weak				+1.17 Strong
Udder depth	Deep				+0.71 Shallow
Front teat placement	Wide				+1.35 Close
Rear teat placement	Wide				+1.75 Close
Teat length	Short				-0.95 Long

# GLADIUS EX 91

823250  
624HO09077  
HOLDEUM000123451708

Born: 2019-7-15 KAX GLADIUS

Beta Caseine **A2A2** | Kappa Caseine **AB** | aAa **234156** |

**TPI 2912** Milk lbs Fat Protein Daughters: 1380  
**NM\$990** +2243 +0.03 % +0.03 % Herds: 471  
 CM\$ 1001 +93 lbs +79 lbs Reliability: 91 %  
 FM\$ 928  
 GM\$ 901



♂ **Gazebo** (♂ Gage)

♀ KAX Dollyanna (2) VG 86 (♂ **Superhero**)

∅ Lac.: 3/2 12781 4,11 525 3,53 451

♀ KAX Dolle (3) VG 87 (♂ **Missouri**)

∅ Lac.: 5/4 14610 3,54 517 3,30 482

♀ KAX Dollargirl (3) VG 86 (♂ **Suran**)



GLADIUS daughter SRS Blackberry VG 85

Proofs: 08-2024

<b>PL</b>	Productive life	+4.4	88 % Rel.
<b>LIV</b>	Livability	-0.7	82 % Rel.
<b>SCS</b>	Somatic cell score	+2.76	90 % Rel.
<b>DPR</b>	Daughter pregnancy rate	-2.5	89 % Rel.
<b>HCR</b>	Heifer conception rate	-2.7	87 % Rel.
<b>CCR</b>	Cow conception rate	-1.9	86 % Rel.
<b>FI</b>	Fertility index	-1.7	86 % Rel.
<b>SCE</b>	Sire calving ease	2.6 %	83 % Rel.
<b>DCE</b>	Daughter calving ease	2.7 %	76 % Rel.
<b>SSB</b>	Sire stillbirth	6.0 %	70 % Rel.
<b>DSB</b>	Daughter stillbirth	5.4 %	78 % Rel.
<b>GL</b>	Gestation length	-1.0	74 % Rel.

823250 Gladius EX 90		-1	0	+1	+2
PTAT	Type				+0.88
UDC	Udder Composite				+1.09
FLC	Feet & Legs Composite				+0.55
BSC	Body Composite				-0.49
Stature	Short				+0.43 Tall
Strength	Frail				-0.18 Strong
Body depth	Shallow				-0.13 Deep
Dairy form	Tight Ribbed				+0.78 Open Ribbed
Rump angle	High Pins				+0.55 Sloped
Thurl width	Narrow				-0.51 Wide
Rear leg (side view)	Posty				-2.26 Sickled
Rear leg (rear view)	Hock-in				+0.90 Straight
Foot angle	Low Angle				+0.98 Steep Angle
Feet & Legs Score	Low				+0.61 High
Fore udder attachment	Loose				+1.22 Strong
Rear udder height	Low				+1.48 High
Rear udder width	Narrow				+1.35 Wide
Udder cleft	Weak				+0.28 Strong
Udder depth	Deep				+0.88 Shallow
Front teat placement	Wide				+0.65 Close
Rear teat placement	Wide				+0.82 Close
Teat length	Short				-0.59 Long

# PREDAR

619213  
HOLDNKM00000261168

Born: 2019-8-23 TIRSVAD K&L PURSUIT MINSK

Beta Caseine **A1A2** | Kappa Caseine **AA** | aAa **315246** | |

**TPI 2858** Milk lbs Fat Protein Daughters: 94  
**NM\$939** +872 +0.12 % +0.06 % Herds: 29  
 CM\$ 953 +64 lbs +43 lbs Reliability: 88 %  
 FM\$ 852  
 GM\$ 921



♂ Pursuit (♂ Imax)

♀ Pen-Col Sh. Mistral (2) EX 91 (♂ Superhero)

∅ Lac.: 3/3 14131 4,47 631 3,62 512

♀ Pen-Col Silver Missy (♂ Silver)

∅ Lac.:

♀ Pen-Col SS Mistress (1) GP 82 (♂ Supersire)



PREDAR daughter Pretty

Proofs: 08-2024

<b>PL</b>	Productive life	+6.4	83 % Rel.
<b>LIV</b>	Livability	+2.0	79 % Rel.
<b>SCS</b>	Somatic cell score	+2.74	88 % Rel.
<b>DPR</b>	Daughter pregnancy rate	+1.2	83 % Rel.
<b>HCR</b>	Heifer conception rate	+3.3	% Rel.
<b>CCR</b>	Cow conception rate	+2.2	79 % Rel.
<b>FI</b>	Fertility index	+1.9	- % Rel.
<b>SCE</b>	Sire calving ease	1.7 %	- % Rel.
<b>DCE</b>	Daughter calving ease	- %	- % Rel.
<b>SSB</b>	Sire stillbirth	5.7 %	- % Rel.
<b>DSB</b>	Daughter stillbirth	- %	- % Rel.
<b>GL</b>	Gestation length	+1.0	% Rel.

		-1	0	+1	+2
PTAT	Type				+0.38
UDC	Udder Composite				+0.77
FLC	Feet & Legs Composite				+2.93
BSC	Body Composite				-0.52
Stature	Short				-0.91 Tall
Strength	Frail				-0.32 Strong
Body depth	Shallow				-0.76 Deep
Dairy form	Tight Ribbed				+0.31 Open Ribbed
Rump angle	High Pins				+0.72 Sloped
Thurl width	Narrow				+0.72 Wide
Rear leg (side view)	Posty				-0.09 Sickled
Rear leg (rear view)	Hock-in				+2.56 Straight
Foot angle	Low Angle				+0.35 Steep Angle
Feet & Legs Score	Low				+2.66 High
Fore udder attachment	Loose				+0.45 Strong
Rear udder height	Low				+1.28 High
Rear udder width	Narrow				+1.09 Wide
Udder cleft	Weak				+0.66 Strong
Udder depth	Deep				+0.35 Shallow
Front teat placement	Wide				-0.65 Close
Rear teat placement	Wide				-1.22 Close
Teat length	Short				+2.13 Long

# GARIDO

811606  
624HO09030  
HOLDEUM000122629481

Born: 2017-8-24 GARIDO

Beta Caseine **A1A2** | Kappa Caseine **AE** | aAa **315426** | | **H1C**

**TPI 2854** Milk lbs Fat Protein Daughters: 4928  
**NM\$755** +1405 +0.13 % +0.04 % Herds: 1288  
 CM\$ 768 +88 lbs +55 lbs Reliability: 94 %  
 FM\$ 685  
 GM\$ 713



♂ Gymnast (♂ Doorsopen)

♀ Sunrise (2) VG 86 (♂ Penley)

∅ Lac.: 5/4 10730 4,16 446 3,68 395

♀ Shirley (♂ Boss)

∅ Lac.: -/-

♀ Sambuca (3) VG 86 (♂ Beacon)



GARIDO daughter Galinea 2nd lactation VG 87

Proofs: 08-2024

<b>PL</b>	Productive life	+2.3	90 % Rel.
<b>LIV</b>	Livability	-0.2	82 % Rel.
<b>SCS</b>	Somatic cell score	+2.71	90 % Rel.
<b>DPR</b>	Daughter pregnancy rate	-1.4	90 % Rel.
<b>HCR</b>	Heifer conception rate	+0.3	88 % Rel.
<b>CCR</b>	Cow conception rate	+0.1	89 % Rel.
<b>FI</b>	Fertility index	±0.0	88 % Rel.
<b>SCE</b>	Sire calving ease	2.1 %	88 % Rel.
<b>DCE</b>	Daughter calving ease	1.7 %	82 % Rel.
<b>SSB</b>	Sire stillbirth	6.2 %	76 % Rel.
<b>DSB</b>	Daughter stillbirth	4.4 %	84 % Rel.
<b>GL</b>	Gestation length	-2.9	77 % Rel.

		-1	0	+1	+2
PTAT	Type				+1.22
UDC	Udder Composite				+1.52
FLC	Feet & Legs Composite				+0.77
BSC	Body Composite				+1.17
Stature	Short				+1.20 Tall
Strength	Frail				+1.01 Strong
Body depth	Shallow				+0.55 Deep
Dairy form	Tight Ribbed				+0.43 Open Ribbed
Rump angle	High Pins				-0.93 Sloped
Thurl width	Narrow				+1.93 Wide
Rear leg (side view)	Posty				-0.63 Sickled
Rear leg (rear view)	Hock-in				+1.31 Straight
Foot angle	Low Angle				+0.32 Steep Angle
Feet & Legs Score	Low				+0.93 High
Fore udder attachment	Loose				+1.26 Strong
Rear udder height	Low				+2.52 High
Rear udder width	Narrow				+2.49 Wide
Udder cleft	Weak				+1.01 Strong
Udder depth	Deep				+1.19 Shallow
Front teat placement	Wide				-0.59 Close
Rear teat placement	Wide				+0.47 Close
Teat length	Short				+0.49 Long



# GARFIELD

769105

HOLDEUM000362072016

Born: 2019-5-10 GARFIELD

Beta Caseine **A1A2** | Kappa Caseine **AB** | aAa **432516**

**TPI 2804** Milk lbs Fat Protein Daughters: 1474  
**NM\$729** +1345 +0.01 % +0.04 % Herds: 677  
 CM\$ 743 +54 lbs +52 lbs Reliability: 92 %  
 FM\$ 663  
 GM\$ 703



♂ Gywer RDC (♂ Gymnast)

♀ Alexis (3) VG 88 (♂ Bandares)

∅ Loc.: 3/2 11239 4,48 504 3,80 427

♀ Dream (4) EX 91 (♂ Damaris)

∅ Loc.: 4/4 14798 4,07 602 3,61 534

♀ Alexa One EX 90 (3) (♂ NUMERO UNO)



GARFIELD daughter Sophia

Proofs: 08-2024

<b>PL</b>	Productive life	+4.8	88 % Rel.
<b>LIV</b>	Livability	+1.8	80 % Rel.
<b>SCS</b>	Somatic cell score	+2.64	91 % Rel.
<b>DPR</b>	Daughter pregnancy rate	+1.4	89 % Rel.
<b>HCR</b>	Heifer conception rate	+1.1	% Rel.
<b>CCR</b>	Cow conception rate	+1.9	87 % Rel.
<b>FI</b>	Fertility index	+1.9	- % Rel.
<b>SCE</b>	Sire calving ease	1.7 %	79 % Rel.
<b>DCE</b>	Daughter calving ease	2.4 %	67 % Rel.
<b>SSB</b>	Sire stillbirth	5.7 %	54 % Rel.
<b>DSB</b>	Daughter stillbirth	5.5 %	72 % Rel.
<b>GL</b>	Gestation length	-1.0	% Rel.

769105 Garfield		-1	0	+1	+2
PTAT	Type				+1.44
UDC	Udder Composite				+1.34
FLC	Feet & Legs Composite				+0.51
BSC	Body Composite				+0.43
Stature	Short				+1.71 Tall
Strength	Frail				+0.28 Strong
Body depth	Shallow				+0.68 Deep
Dairy form	Tight Ribbed				+1.00 Open Ribbed
Rump angle	High Pins				-0.17 Sloped
Thurl width	Narrow				+1.46 Wide
Rear leg (side view)	Posty				+0.16 Sickled
Rear leg (rear view)	Hock-in				+0.86 Straight
Foot angle	Low Angle				+1.34 Steep Angle
Feet & Legs Score	Low				+0.79 High
Fore udder attachment	Loose				+1.54 Strong
Rear udder height	Low				+2.30 High
Rear udder width	Narrow				+2.02 Wide
Udder cleft	Weak				+0.45 Strong
Udder depth	Deep				+1.49 Shallow
Front teat placement	Wide				+1.03 Close
Rear teat placement	Wide				+0.07 Close
Teat length	Short				+0.78 Long

# GARNIER

811640

HOLDEUM001269545651

Born: 2019-7-27 GARNIER

Beta Caseine **A1A2** | Kappa Caseine **AA** | aAa **342516**

**TPI 2705** Milk lbs Fat Protein Daughters: 369  
**NM\$719** +1228 +0.11 % +0.03 % Herds: 123  
 CM\$ 727 +76 lbs +48 lbs Reliability: 90 %  
 FM\$ 662  
 GM\$ 705



♂ Gywer RDC (♂ Gymnast)

♀ SAL-Arielle (3) VG 89 (♂ Salvatore)

∅ Loc.: 3/2 12870 4,19 539 3,35 431

♀ Attraction (1)F 74 (♂ Sunfish RF)

∅ Loc.:

♀ Blondin TJR Aroma (1) VG 85 (♂ Supersire)



GARNIER daughter BcH Bany VG 86

Proofs: 08-2024

<b>PL</b>	Productive life	+2.3	87 % Rel.
<b>LIV</b>	Livability	-0.4	79 % Rel.
<b>SCS</b>	Somatic cell score	+2.87	90 % Rel.
<b>DPR</b>	Daughter pregnancy rate	-0.8	88 % Rel.
<b>HCR</b>	Heifer conception rate	+0.1	% Rel.
<b>CCR</b>	Cow conception rate	+0.1	80 % Rel.
<b>FI</b>	Fertility index	±0.0	- % Rel.
<b>SCE</b>	Sire calving ease	1.8 %	- % Rel.
<b>DCE</b>	Daughter calving ease	- %	- % Rel.
<b>SSB</b>	Sire stillbirth	5.6 %	- % Rel.
<b>DSB</b>	Daughter stillbirth	- %	- % Rel.
<b>GL</b>	Gestation length	-2.0	% Rel.

811640 Garnier		-1	0	+1	+2
PTAT	Type				+0.99
UDC	Udder Composite				+1.12
FLC	Feet & Legs Composite				+0.29
BSC	Body Composite				-0.70
Stature	Short				+1.27 Tall
Strength	Frail				-0.30 Strong
Body depth	Shallow				-0.35 Deep
Dairy form	Tight Ribbed				+1.69 Open Ribbed
Rump angle	High Pins				+0.02 Sloped
Thurl width	Narrow				+0.27 Wide
Rear leg (side view)	Posty				+0.09 Sickled
Rear leg (rear view)	Hock-in				+0.58 Straight
Foot angle	Low Angle				-0.35 Steep Angle
Feet & Legs Score	Low				+0.59 High
Fore udder attachment	Loose				+0.27 Strong
Rear udder height	Low				+2.34 High
Rear udder width	Narrow				+2.09 Wide
Udder cleft	Weak				+1.52 Strong
Udder depth	Deep				+0.54 Shallow
Front teat placement	Wide				+1.27 Close
Rear teat placement	Wide				+0.91 Close
Teat length	Short				+1.50 Long

# VALUE PP

499381  
624JE08004



Born: 2023-01-27

JEDNK005344805186

JPI +81 | Beta Caseine **A1A2** | Kappa Caseine **BB** | aAa **432561**

<b>NM\$</b> +238	Milk lbs	Fat	Protein	CFP
<b>CM\$</b> +247	-335	+0.20 %	+0.09 %	+26
<b>FM\$</b> +170		+22 lbs	+4 lbs	
<b>GM\$</b> +210				

<b>PL</b> Productive life	+3.0	71 % Rel.
<b>LIV</b> Livability	+1.4	60 % Rel.
<b>SCS</b> Somatic cell score	2.93	74 % Rel.
<b>DPR</b> Daughter pregnancy rate	+0.8	68 % Rel.
<b>HCR</b> Heifer Conception Rate	+3.1	58 % Rel.
<b>CCR</b> Cow Conception Rate	+2.2	68 % Rel.
<b>FI</b> Fertility Index	+1.5	-- % Rel.
<b>GL</b> Gestation Length	+1.4	71 % Rel.

♂ **Valuable PP** (♂ Denmark P)

└ ♀ DK 53 44804416 P VG 88 (♂ **Salsa-P**)

└ ♀ DK 57 62502998 VG 85 (♂ **Gislev**)

└ ♀ DK 59 29003102 VG 86 (♂ **VJ Link**)



Value PP

Proofs: 2024-08

-1      0      +1      +2

PTAT Type				+0.60
JUI Jersey Udder Index				+17.8
Stature	Short			+1.80 Tall
Strength	Frail			+0.40 Strong
Dairy form	Tight Ribbed			+0.30 Open Ribbed
Rump angle	High Pins			+0.30 Sloped
Thurl width	Narrow			+0.80 Wide
Rear leg (side view)	Posty			-0.60 Sickled
Foot angle	Low Angle			+0.90 Steep Angle
Fore udder attachment	Loose			+2.00 Strong
Rear udder height	Low			+1.30 High
Rear udder width	Narrow			-0.80 Wide
Udder cleft	Weak			+0.10 Strong
Udder depth	Deep			+3.30 Shallow
Front teat placement	Wide			-0.10 Close
Rear teat placement side	Wide			+0.40 Close
Teat length	Short			+0.40 Long

Jersey



© Elly Geverink

DK 53 44804416 P (Dam)



# LIBORI PP

585513  
624JE08005  
JEDEU000124809382



Born: 2022-11-20

**JPI** +13  
**NM\$** +50  
**CM\$** +43  
**FM\$** +97  
**GM\$** -24

Beta Caseine **A2A2** | Kappa Caseine **BB**

Milk lbs	Fat	Protein	CFP
+859	-0.24 %	-0.08 %	+10
	-6 lbs	+16 lbs	

<b>PL</b>	Productive life	+1.7	69	% Rel.
<b>LIV</b>	Livability	-0.2	58	% Rel.
<b>SCS</b>	Somatic cell score	3.05	71	% Rel.
<b>DPR</b>	Daughter pregnancy rate	-1.1	67	% Rel.
<b>HCR</b>	Heifer Conception Rate	-1.1	56	% Rel.
<b>CCR</b>	Cow Conception Rate	-1.6	66	% Rel.
<b>FI</b>	Fertility Index	-1.2	--	% Rel.
<b>GL</b>	Gestation Length	-0.1	66	% Rel.

♂ **Luke-PP** (♂ **Cojack-PP**)

♀ **Alberta GP 84** (♂ **Sol PP**)

♀ **Titanic VG 85** (♂ **Golda**)

♀ **Dk VG 87** (♂ **Sultan**)



Libori PP

Proofs: 2024-08

		-1	0	+1	+2	
PTAT Type						+0.30
JUI Jersey Udder Index						+11.2
Stature	Short					+1.30 Tall
Strength	Frail					+0.50 Strong
Dairy form	Tight Ribbed					+0.30 Open Ribbed
Rump angle	High Pins					+1.10 Sloped
Thurl width	Narrow					+0.50 Wide
Rear leg (side view)	Posty					+0.30 Sickled
Foot angle	Low Angle					-0.30 Steep Angle
Fore udder attachment	Loose					+0.40 Strong
Rear udder height	Low					+0.90 High
Rear udder width	Narrow					+0.00 Wide
Udder cleft	Weak					+0.00 Strong
Udder depth	Deep					+0.50 Shallow
Front teat placement	Wide					-0.90 Close
Rear teat placement side	Wide					+0.60 Close
Teat length	Short					+1.60 Long

Jersey



Alberta (Dam)



# Herd genotyping

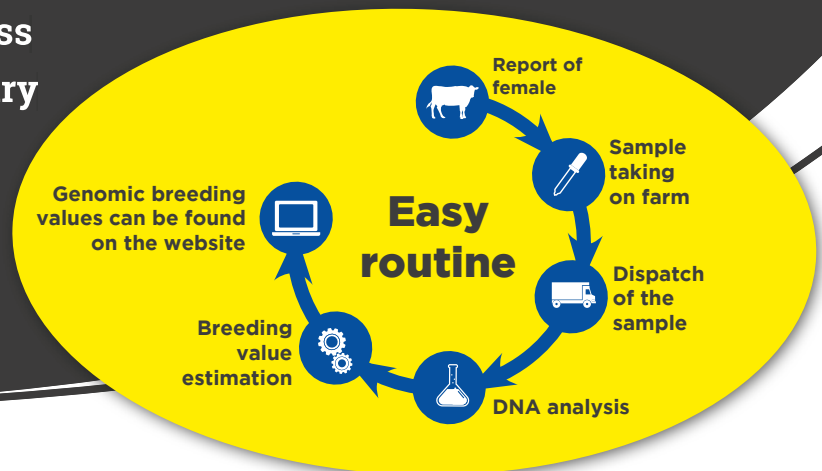


**Make  
the right  
decision  
with herd  
genotyping!**

## The advantages for your herd:

- ✓ Exclusive genomic breeding values
- ✓ More focused mating decisions
- ✓ Optimized mating service
- ✓ Perfect selection for herd replacement
- ✓ Increased breeding progress
- ✓ Efficient use of beef on dairy
- ✓ Reduced rearing costs
- ✓ Increased profitability

**Tipp:** The genotyping of the whole herd leads to full control of the herd progress and highest profitability.



**GGI-SPERMEX**  
Genetics made in Germany

**For more information, please contact  
your GGI-SPERMEX partner!**

Am Osterfeld 14  
49661 Cloppenburg-Bethen  
Germany

Ottostraße 26  
85521 Ottobrunn  
Germany

Phone: +49 4471 91 74-0  
Fax: +49 4471 91 74-74

Phone: +49 89 665 98 46-0  
Fax: +49 89 665 98 46-29

Email: [info@ggi-spermex.de](mailto:info@ggi-spermex.de)  
Internet: [www.ggi-spermex.de](http://www.ggi-spermex.de)

Email: [info@ggi-spermex.de](mailto:info@ggi-spermex.de)  
Internet: [www.ggi-spermex.de](http://www.ggi-spermex.de)

✉ [info@ggi-spermex.de](mailto:info@ggi-spermex.de)  
🌐 [www.ggi-spermex.de](http://www.ggi-spermex.de)



The specifications regarding the breeding values are based on computer models of the vit in Verden, Germany and NAAB in Columbia, USA. Specifications regarding the health status of the bulls result from tests done by national and international laboratories. For the correctness of the results mentioned in this catalogue GGI-SPERMEX does not assume any liability. Furthermore, our general terms and conditions are valid which can be obtained by phone +49-4471-9174 0 or email to [info@ggi-spermex.de](mailto:info@ggi-spermex.de).